



MediPrakt[®]

**2026
Edition**

K-19, Naveen Shahdara , Delhi 110032
Naman Jain: 9811204287, Agrim Jain: 9717305700
Email: medipraktindia@gmail.com
www.MediPrakt.com

Table of Contents

	Page No.
• Skeletons & Bone Models	01
• Human Torso Models	10
• Muscular Models	11
• Organs Models	13
• System Models	22
• Nursing Training Manikins.....	25
• Injection Simulators	36
• Suture Training Simulators	43
• Catheterization Simulators	47
• Intubation Manikins	49
• CPR Training Manikins	52
• AED Trainers	61
• Laerdal Models	62
• Gynaecology Manikins	64
• Medical Training Manikins	76
• ACLS Manikins	83
• Wound Training Simulators	86
• Botox Injection Trainers	89
• Diseased / Pathology Models	90
• Saw Bones	96
• Fluoroscopy Trainers	98

MP-101 Human Skeleton Life Size 180 CMS.



A full-size human skeleton model on stand, articulated to allow demonstration of basic movements, and features a vertebral artery and herniated lumbar disc (slipped disc). The skull part of the skeleton includes a movable jaw, cut calvarium (top of skull), suture lines, and 3 removable lower teeth. It is a pelvic mounted skeleton and the legs are removable for study if required, and the skeleton can also be easily removed from its stand. It is also possible to hang this model from top of the skull if required (mounting not provided). The plastic skeleton comes with a stand, and the 5 caster stand ensures a stable and movable base. A hard wearing and washable skeleton reproduction.

MP-101A Life Size Skeleton With Ligaments And Painted Muscles



The model is anatomically correct. All over 200 bones, anatomical details and structures are represented. The joints are movable. Legs can be removed easily via simple screw connections. The skull consists of the base of skull, Calvarium, jaw (on spring). Features nerve branches, vertebral artery & herniated lumbar disc. The model is made of high quality PVC and therefore durable and easy to clean. The skeleton is assembled. Minor assembly can be done within a few minutes without tools. Special feature. The left side of the skeleton shows the points of origin (red) and the points of insertion (blue) of the muscles. With flexible ligaments on right side makes it possible to demonstrate all kinds of human movement of the arm and leg.

MP-102 Skeleton 85 CMS.



Ideal for studying the structure and function of the many bones of the human body, Extremely detailed. The model features movable joints to demonstrate and study the movement of joint giving it a life like feel, Placed on stand for perfect display and demonstration. The model is made of high quality PVC.

MP-102B 85CMS. Skeleton With Nerves And Blood Vessels



This educational teaching skeleton model depicts the position, course and distribution of main arteries and peripheral nerves of the human body. Detailed enough to satisfy students, doctors or anyone interested in the human skeleton. Removable calvarium. Size: 85cm.

MP-103 Mini Human Skeleton (Tall 42 CMS)



This most popular miniature skeleton model offers a unique hands-on learning experience for young scientist, curious kids or medical professionals. Special features include a movable jaw, removable calvarium, arms and legs that are removable for individual study. Size: 42CM.

MP-1224 Fetus Skeleton



This life size model of fetus skeleton is made from high quality PVC. Every part is made in a manner so that all joints can move freely.

MP-130 Disarticulated Human Skeleton (Bilateral) (200 Bones) Bone Set For Medical Students



Size: Life Size. Disarticulated adult human skeleton is useful for students to learn various bones. The skull includes movable jaw, cut calvarium, suture lines and 3 removable lower teeth. The left hand and left foot are on wire About 200 different bones. Made of PVC plastic. Packing: 1pcs/carton, 63x28x20cm, 9kgs.

MP-130B Disarticulated Skeleton (Bilateral) With Painted Muscles



Size: Life Size. With muscles painted on one side of the skeleton. Dis-articulated adult human skeleton is useful for students to learn various bones. The skull includes movable jaw, cut calvarium, suture lines and 3 removable lower teeth. The left hand and left foot are on wire. About 200 different bones. Made of PVC plastic. Packing: 1pcs/carton, 63x28x20cm, 9kgs.

MP- 121 Fetal Skull

Life Fetal Skull is detailed to show the major structure of different bones of the skull. The mandible is spring hinged to view the bone structures of the mouth. This model is lifelike and is made of PVC Plastic. Size: 10x8x10 cms.



MP-104 Adult Skull (Life Size)

The life size skull model features a movable jaw on a spring with 3 removable teeth (incisor, cuspid and molar), ideal for study of the mouth and teeth. The top of the calvarium is removable to reveal the interior and brain cavity, with internal bone structures visible.



MP-104C Adult Coloured Skull (Life Size)

This is an advanced model of life-size skull, bones painted in different colors for precise study. Can be disassembled into 3 parts. Made of PVC plastic, natural size.



MP-1202PN Skull With Painted Sutures & Numbers



Numbered skull model is made of durable PVC material and anatomically correct. And the bottom jaw is secured by a spring that still allows articulation. Supplied With A manual and A study chart, which is very helpful for medical course learning.

MP-1201PN Skull With Painted Muscles

Separates into 3 parts; the skull cap and mandible are removable. Features hand painted muscle origins in red, and insertions in blue.



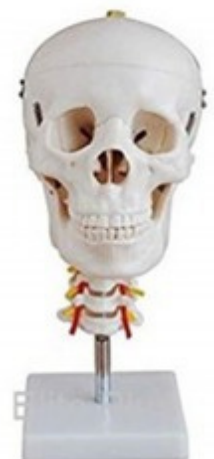
MP-104E Skull With 8 Part Brain

Consists of life-size skull model with an 8-part brain nested within the skull. The frontal and parietal lobe, temporal and occipital lobe, encephalic trunk and cerebellum are all identifiable on the brain model. The skull shows bony details such as fissures and foramina, has a movable jaw and 3 removable teeth.



MP-135 Skull With Cervical Spine

Life size model of human skull on cervical spine. Cervical spine is shown with seven cervical intervertebral discs, cervical nerves, vertebral arteries, basilar artery and rear cerebral arteries. Skull is dissectible into 3 parts with moveable jaw, cut calvarium.



Skeletons & Bone Models

MP-123 Adult Male Pelvis



Consists of 2 upper parts of ilium, sacrum and coccyx, fourth and fifth lumbar vertebra as well as disc and symphysis.
Life size, made of advanced PVC.

MP-127 Birth Demonstration Model



This model consists of 2 innominate bones, sacrum, coccyx, with fetal skull which is firmly connected to the model by means of a flexible metal tube which can be fixed in every position. It facilitates the study of natural birth. Life size.

MP-125 Adult Female Pelvis with Muscles and Organs



This model helps to get an integral knowledge of various important structures, such as pelvic muscles and pelvic organs as a whole. This model is made of PVC Plastic. Life size.

MP-124 Adult Female Pelvis



It shows the following: Pelvis shapes: Short and broad, Pelvis cava: Like a barrel, Aperture pelvis superior: Rounded, Sacrum: Broad and short with little flexibility, Angles of pelvis arch: 90-100 degree, Symphysis pubica: Short and broad.

MP-124A Flexible Female Pelvis



Shown in accurate detail, this pelvis model can be manipulated to demonstrate how the pelvis moves to accommodate delivery. Flexible anatomy allows exaggerated movements for presenting to a group. Three separate bone segments are joined together with flexible cord, helping viewers visualize how the pelvic bones flex during birth.

MP-125A Female Pelvis with Muscles, Organs and Nerves Model



Removable organs.
Highly detailed to show the vessels, ligaments, nerves, pelvic floor muscles and female pelvic organs. Detachable pelvis model illustrates the anatomy of the female pelvis more clearly.
Material: PVC Plastic

MP-109 Shoulder Joint Model with Ligaments

- Lifesize, , Made ofPVC
- Show shoulder joint abduction, adduction, forward tilt, backward tilt and inward/outward rotation.
- It is constructed with flexible plastic ligaments.
- Mounted on a plastic base.



MP-110 Hip Joint Model with Ligaments

- Life size, , Made of PVC
- Accurate representation of the hip joint and its ligaments
- It is constructed with flexible plastic ligaments.
- Mounted on a plastic base.



MP-111 Knee Joint Model with Ligaments

- Life size, , Made of PVC
- Model represents a functional model of knee joint with lateral ligaments, meniscus and patellar ligament
- It is constructed with flexible plastic ligaments
- Mounted on a plastic base



MP-112 Elbow Joint Model with Ligaments

- Life size, , Made of PVC
- Demonstrates flexion, extension, and internal/ external rotation of the radius
- It is constructed with flexible plastic ligaments
- Mounted on a plastic base



MP-114A Hand Joint Model with Ligaments

- Life size, , Made of PVC
- Demonstrate all the hand functionality and the external anatomical structure
- It is constructed with flexible plastic ligaments
- Mounted on a plastic base.



MP-113A Foot Joint Model with Ligaments

- Life size, , Made of PVC
- Demonstrate all the foot functionality and the external anatomical structure
- It is constructed with flexible plastic ligaments
- Mounted on a plastic base.



MP-114 Hand Joint Model

- Life size, , Made of PVC
- Demonstrate all the hand functionality and the external anatomical structure.
- Mounted on a plastic base



MP-113 Foot Joint Model

- Life size, , Made of PVC
- Demonstrate all the foot functionality and the external anatomical structure.
- Mounted on a plastic base



MP-126 Life Size Vertebral Column with Pelvis and Femur Heads (85 cms.)



This highly detailed life-size model shows all significant features of each vertebrae, including spinal cord, nerve roots, the vertebral artery, a herniated disc and vertebral notch etc. Ideal teaching models for students, patient education by chiropractors, orthopedic surgeons and other medical professionals. Special features include: 29" tall vertebral column complete with pelvis, femur heads, sacrum, occipital bone, vertebral artery, all nerve branches and herniated lumbar disc. Comes with deluxe chrome stand.

MP-126A Didactic Flexible Coloured Life-Size Spine with Pelvis



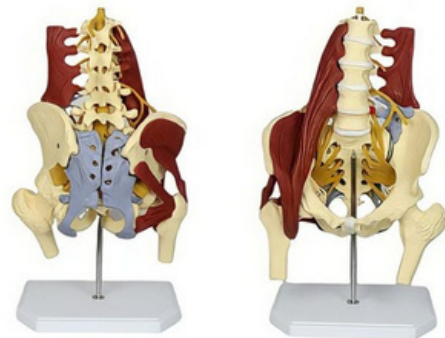
The spinal cord is color coded for better display. This highly detailed fully-flexible life-size spine model shows all significant features of each vertebrae, including spinal cord, nerve roots, the vertebral artery, a herniated disc and vertebral notch etc. Special features include: 29" tall vertebral column, features different sections of the spinal column in different points: cervical vertebrae, thoracic vertebrae, lumbar vertebrae, sacrum and the coccyx.

MP-126C Life Size Spine with Muscles and Disorders



Spinal Curvatures are color-coded, Occipital bone and cerebellum Circle of Willis, Vertebral artery Spinal nerves with sciatic nerve, Right brachial plexus 1st and 2nd ribs Sacroiliac ligaments, Several muscles including: Suboccipital triangle, Longus capitis, Scalene muscles Psoas major and minor Iliacus Gluteus medius and minimus Piriformis, Gemellus. Bone spurs on L5, Herniated disc between L4 & L5, L1, L2 and L3 divide to show compression fractures, osteoporosis, bone tumor Osteoarthritis of the hip Hanging stand included Size: 34".

MP- 1223C Lumbar Spine with Muscles



- This product can truly reproduce the human spine, with pelvic muscle, disc herniation, spinal nerve and upper femur, is a rare aid to your for practical training.
- Different colors are used to distinguish different positions
- Made of high quality PVC material, it is extremely affordable and durable, with a flexible mounting of the femoral head and pedestal

MP-1223 Mini Spine Model

- 45 cms tall
- Made of PVC Plastic, unbreakable
- Consists of the cervical, thoracic and lumbar vertebrae, sacrum, coccyx, complete pelvis and femur heads.
- Representation of the spinal nerve branches and a prolapsed L3-L4 intervertebral disc.
- Mounted on stand



MP-1223A Mini Coloured Spine Model

Fivedifferentcolors separateeachofthe featureson thisdidacticspine, including the 7 cervical vertebrae, 12 thoracic vertebrae, 5 lumbar vertebrae, sacrum and coccyx. Use this new spinal column for simplified patient education or for lessons in a classroom environment where the didactic colors help to immediately track the explanation about the human spine, even from a distance. This spine is not only an extremely good value but it also a durable spine. Model includes full pelvis and occipital plate, and is fully flexible mounting throughout spine. L3-L4 disc prolapsed on spine, Spinal nerve exits, and Cervical vertebral artery are a few other features of this spine, which has movable femur heads.



MP-1223B Mini Flexible Spine Model

- 45 cms tall
- Fully-flexible
- Made of PVC Plastic, unbreakable
- Consists of the cervical, thoracic and lumbar vertebrae, sacrum, coccyx, complete pelvis and femur heads.
- Representation of the spinal nerve branches and a prolapsed L3-L4 intervertebral disc.
- Mounted on stand



MP-115 Pelvis with 5 Pcs. Lumbar Vertebrae



Life-size Lumbar Vertebrae are shown with normal intervertebral disc, spinal cord and pelvis.

MP-119 Lumbar Sacrum with Herniated Disc



The model features anatomy of lumbar spine, sacrum, and coccyx and also shows herniated lumbar disc.

MP-133 Cervical Spine with Neck Artery and Occipital Bone Model



Shows the Cervical Vertebral Column with neck artery and nerve roots.

MP-120 Thoracic Spinal Column



This spinal replica consists of the 12 thoracic vertebrae with intervertebral discs, thoracic nerves and spinal cord. This quality thoracic spinal column is affordable and anatomically correct. Spinal column delivered on stand.

MP-Deluxe Cervical Model



Features brain stem, occipital bone, atlas and axis through C7, with herniated disc, T1 and T3. This model has a soft cerebellum and full nerve with right side brachial plexus. Muscles include sub occipital triangle, longus capitis, levator scapulae, scalenus medius posterior and anterior.

MP-1504 Disc Prolapse Simulator



Demonstrates the principles of an intervertebral slipped disc in an interactive way; if the two vertebrae are pressed, the prolapse can be seen. Comprises of two lumbar vertebrae and an intervertebral disc.

MP-134 Vertebral Osteoporosis Model



Divided lumbar vertebrae with intervertebral discs. The upper section shows healthy bone structure, the middle section osteoporotic bone structure and the lower section advanced osteoporotic bone structure with flattened plates, deformation and decreased bone mass.

MP-H-151 Osteoporosis Model (Femur & 4 Vertebrae)



Consists of an osteoporosis femur model and an osteoporosis vertebrae model. The well-crafted and dedicated designed medical skeleton trauma anatomy instruments are great for school teaching, learning display, collection, and lab supplies.

MP-1505 Lumbar Vertebrae Degeneration Model

4 Stages Of Lumbar Degeneration Model is a set of four, full size two-piece vertebrae models. It features one each of the following conditions: normal, OE bulging, herniated disc, bone and disc degeneration, and advanced osteoporosis with marked bone compression and bone spurs.



MP-L045B 4 Stages Knee Arthritis Model



The arthritis model offered by us is designed using premium quality material and advanced techniques in strictly adhering to set guidelines. The model shows the different stages of knee arthritis.

MP 3 Stage Arthritis Knee Model with Implant



This impressive model shows three scaled down knee models. In addition to the healthy knee this model shows a diseased knee as well as a knee with knee implant. All models are movable, upper and lower leg can be separated.

MP-1212P Life-Size Muscular Shoulder Joint Model



Shows a full size normal right shoulder with muscles attached. It includes: infraspinatus, subscapularis, supraspinatus, teres major and minor muscles; acromion, clavicle, humerus and scapula bones; plus eight ligaments and tendons

MP-1225 Muscular Hip Joint Model



In the hip model, the following muscles are illustrated obdurator externus, glutinous medius, gemellus superior and inferior, and iliacus with a branch of the psoas major. Life size. Made of PVC.

MP-1226 Muscular Knee Joint Model



Life size. It is a realistic replica of knee joint muscles and ligaments. Made of PVC Plastic. Mounted on a stand.

MP-1707 Hand with Main Vessels & Nerves



1 - The model shows the networks of blood vessels and nerves, ligamentous apparatus.

2 - Separated into 5 parts and 42 positions are displayed.

Size: 22.7*13.7*5.7cm

MP-204 Unisex Torso 23 Parts 85 CM



Size: 85 cms, Made of PVC.
 Features an exposed spine with removable vertebra and spinal cord segments. Mounted on a plastic base
 Interchangeable male and female genitalia. The female organs include a fetus in the womb
 Dissectible into 23 parts: torso, female breast plate, head, eyeball, brain, vertebra spinal nerves, lung (2 parts), heart (2 parts), liver, kidney, stomach (2 parts), intestines (4 parts), male genitalia (2 parts), female genitalia with fetus (3 parts).

MP-201 85CM Male Torso 19 Parts

This is a full-size male torso. Hand painted and meticulously assembled to simulate human anatomy.
 Dissects into 19 parts: torso, head (2 parts), brain, lung (4 parts), heart, trachea, esophagus and descending aorta, diaphragm, stomach, duodenum with pancreas and spleen, intestines, kidney, liver and bladder (2 parts).
 Mounted on plastic base.



MP-205 Miniature Torso 28 cms



This model shows 15 detachable pieces of the human body: the trunk, the brain, the heart, the esophagus and the aorta, the lung, the skull cover, the stomach, the diaphragm, the liver, the pancreas and spleen, intestines.
 Human torso model for anatomical study.

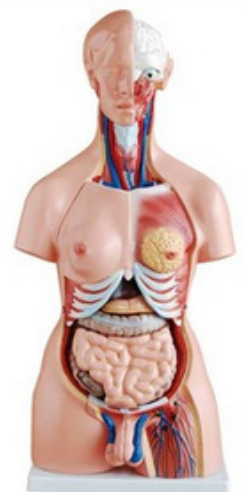
The model is made of polyvinyl chloride (PVC) plastic, which is

MP-205A Mini Unisex Torso 50 cms

Features an exposed spine with removable vertebra and spinal cord segments, a female breast plate and interchangeable male and female genitalia. The female organs include a fetus in the womb.

Dissected into 23 parts: torso, female breast plate, head, eyeball, brain, vertebra spinal nerves, lung (2 parts), heart (2 parts), liver, kidney, stomach (2 parts), intestines (4 parts), male genitalia (2 parts), female genitalia with fetus (3 parts).

Made of PVC plastic. Mounted on a plastic base.



MP- A11301/1 Male Muscular Figure 78 CMS



- This model consists of 27 parts, such as muscles of chest wall and abdomen, muscles of upper and lower limbs, skull, brain and viscus.
- It shows the structure of head, neck, torso, upper and lower limbs, muscles, muscular tendon, ligaments, viscus, blood vessels, brain etc.
- Material: Advance PVC

MP - 339 Life Size Human Muscle Model 29 parts



- This life size muscle model including 29 dissectible parts: body, cut calvarium, brain (2 parts), thoracic and abdominal wall, right arm, left arm (5 parts), right leg, left leg (10 parts), lung (2 parts), heart (2 parts), liver, stomach and intestine. Height: 175cm, width, 86cm, Width: 24cm.

MP-A11305 Muscles of Arm with Main Vessels and Nerves



- The model shows the network of blood vessels and nerves in the right arm, short and long extensor muscle of the radial wrist with branchioradial muscle, round pronator muscle, superficial flexor muscle of the fingers.
- Separated into 6 parts and 87 positions displayed.

MP-A11308 Muscles of Leg with Main Vessels And Nerves



- The standing model shows the most important blood vessels and nerves in the left leg, greatest gluteal muscle, tensor muscle of the broad fascia, sartorius muscle, strait muscle of the femur, semi-membranous muscle, semitendinous muscle, biceps muscle of the femur digitorum longus muscle, triceps muscle of the calf.
- Separated into 10 parts and 82 positions are displayed.

MP- Foot with Muscles Model



Life sized muscular foot model. This model features removable sections to provide a detailed, in depth view of the muscles and ligaments. Model includes a base and mount. Model can be removed for physical study.

MP-18212 Head and Neck with Blood Vessels, Nerves and Brain

- Separated into 19 parts such as: Mimic muscular system with the deep-set muscles, Left temporomaxillary articulation, Sternocleidomastoid muscle, Carotid trigone, Trapezium Muscle, Pectoral major muscle, Deltoid Muscle, Clavicle, Eyes with muscle and nerves, Cranium, Brain with arteries.
- 190 positions are displayed.



MP-18211 Head And Neck Muscles and Vascular Brain Model

Separated into 10 parts. Cranium, eye, cerebral falx, right half of the brain, left half of the brain, cervical vein.



MP-1413PN Half Head Model With Nerves and Vessels

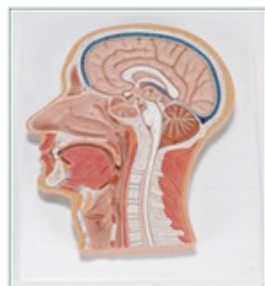
This high quality model represents the outer, superficial and the internal (median section) structures of head and neck. The half head with musculature is delivered on removable stand.



MP-1414P Human Head Model Pharynx Sagittal Section

This elaborate model shows the structure of the brain, spinal cord, nasal cavity and larynx.

33x23x5 cm
Made of PVC



MP-H022 Head with Muscles

This model opens medially along the sagittal plane to reveal details of the oronasal cavity and larynx. The musculature of the pharynx is extremely well depicted.



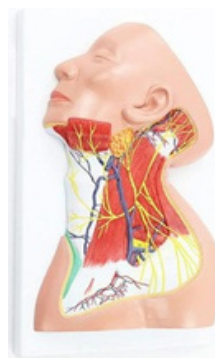
MP-324 Model of the Head

This model shows the interior parts of the mouth cavity and pharynx with network of vessels and trigeminal nerves.

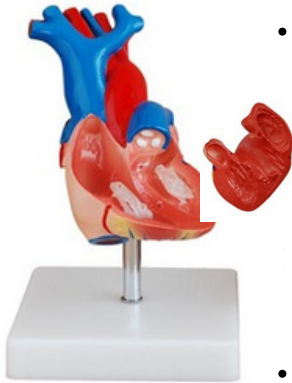


MP-Human Neck with Muscles, Nerves, and Blood Vessels

Highly detailed depiction of the neck's muscles, nerves, and blood vessels. This comprehensive representation is essential for understanding the complex structures and relationships within the neck region.



MP-307A Life Size Heart Model 2 Parts



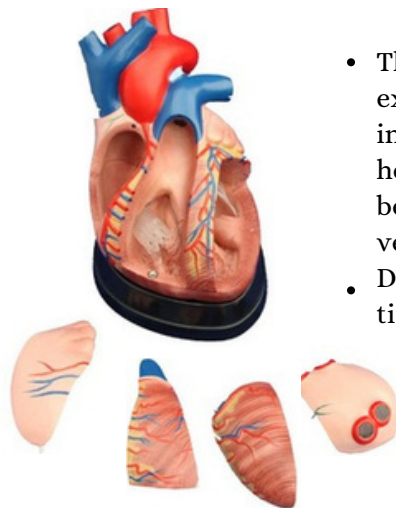
- This heart model shows the anatomy of human heart with ventricles, atriums, valves, veins, and the aorta in great anatomical detail. The front heart wall is removable to view the chambers and internal structure.
- Dissectible into 2 parts.
- Made of PVC Plastic.

MP-307 Jumbo Heart Model



- Size: 25 × 23 × 23 cm.
- Made of PVC plastic.
- Clear conception of routes of the systemic and pulmonary circulation.
- Dissectible into 3 parts. 4 times enlarged.

MP - 307D Middle Heart Model



- This model shows external features and internal structures of heart and its relation between large blood vessels.
- Dissectible into 5 parts, 3 times enlarged.

MP-Basic Lung Anatomy Model



The Basic Lung Model is a full-size, anatomical cutaway model showing bronchus, arteries, veins, lymph nodes, bronchial passage and trachea bifurcation.

MP-320 Larynx, Heart and Lungs Model



Life-size model, separates into 7 parts. The lungs have two removable lobes to show the internal structures, the heart bisects showing atria, ventricles and valves, the larynx bisects and the diaphragm is shown. On stand.

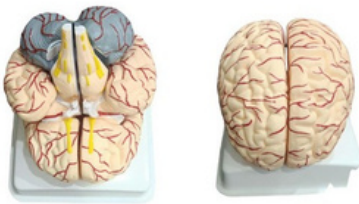
MP-330 Model Of Transparent Lung Segment



This model of transparent lung segment presents 10 segments in the right lung and 8 in the left. The distribution of the bronchial tree can be observed through the transparent lungs. Right lung: right upper lobe (3 segments),

right middle lobe (2 segments) and right inferior lobe (5 segments). Left lung: left upper lobe (4 segments) and left inferior lobe (4 segments). Distribution of the bronchial tree: right bronchus, left bronchus. Hilus of lung, the lung is made of transparent plastic. The trachea and bronchial tree is made of PVC plastic.

MP-308 Brain With Arteries (8 Part)



This 8 part brain model with arteries facilitates a correct understanding of the features of the brain and its arterial supply as a whole relation between their component External features of the brain: cerebral hemisphere, brain stem, cerebellum. The arterial supply of the brain: sources, vertebral, internal carotid arteries, arterial supply of the cerebellum and cerebrum.

MP- 8 Part Coloured Brain Model



A life-size model. The left side is colored to show the sensory and motor areas. The 12 cranial nerves roots are shown and numbered, together with some of the important arteries. Dissects into 8 parts. Supplied on a base.

MP- 2 Part Brain Model



The human brain anatomy model can be divided into two parts, accurately displaying the functional areas of the brain. The model allows users to observe the brain's internal structure.

MP-318 Brain With Arteries on Head



This model shows the brain structure inside the skull. Two halves brain can be disassembled into: Frontal with parietal lobes, temporal with occipital lobes, half of brain stem, half of cerebellum. Life size, dissectible into 9 parts.

MP - 318B Head with Brain



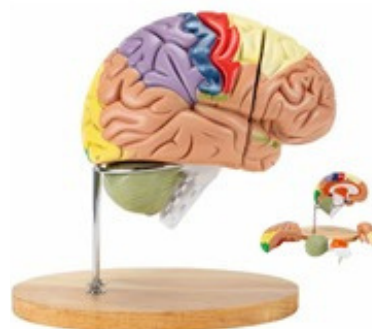
This model shows the head structure including brain structure inside the skull. Dissectible into 10 parts, life size.

MP- Colored Brain Model (2 Parts)



The human brain anatomy model can be divided into two parts, accurately displaying and labeling the functional areas of the brain with different colors. The model allows users to observe the brain's internal structure from all angles to learn the human brain's science better.

MP - 2 Times Magnified Detachable Brain Model



Twice the size of the real brain, cut in the middle, and can be broken down into 4 parts. The anterior lobe and brain stem are removable. Shows the motor center, sensory center and functional center. Made of premium PVC material

MP-302 Magnified Pulmonary Alveoli Model

- Shows the small branches of principal bronchus: Section of bronchiole of no cartilage. The relation between pulmonary alveoli and terminal bronchiole. The structure of alveolar sac and alveolar duct. The capillary rete in the alveolar sapta.
- Size: 26 × 15 × 35 cm



MP-303C Giant Ear Model

- Demonstrates the three main structural parts of the ear organ (outer ear, middle ear and inner ear).
- Dissectible in 6 parts.
- Made of PVC Plastic. Size 33 x 15 x 23 cm.



MP-309 Model Of Anatomical Nasal Cavity



- External nose : shows the section of the nasal bones and cartilages.
- Nasal cavity : on the lateral nasal wall show the superior, middle and inferior nasal chonchae project medially into the nasal cavity forming the superior, middle and inferior nasal maxillary sinuses.
- Paranasal sinuses : shows the frontal, sphenoid and maxillary sinuses.

MP-316 Giant Eye Model



- Size: 15.5cm. Made of PVC. 6 times enlarged model.
- The different parts are detachable.
- Tunica external: showing cornea and sclera with attachments of ocular muscles and optic nerve.
- Tunica media: showing the iris, the ciliary body and the chorioid. Tunica interna is retina. Refraction media: showing the lens and the vitreous body.

MP-316B Eye with Orbit Model

- Shows the optic nerve in its natural position in the bony orbit of the eye (floor and medial wall). At three times life size this eye model is great for anatomical demonstrations.
- Dissectible into 10 parts, 3 times enlarged.



MP- S037 Cataract Eye Model



Includes interchangeable lenses that show various types of cataract conditions including: sub capsular, capsular, mature, cortical and nuclear.

MP-306 Stomach Model



Made of hard plastic, Magnified 2 times the natural size Shows the morphology of the stomach in the distended state. with the longitudinal section, the model shows the structures of the gastric folds, pyloric valve, pyloric sphincter muscles, gastric mucosa and the transitional mucosa of the gastric-esophagus.

MP-Human Liver Model with Gall Bladder



This excellent life-size liver with gall bladder relief model shows the liver with:
Ducts, Gall bladder, Pancreas, Duodenum, Vessels, Extra-hepatic ducts with gall bladder Main pancreatic duct and their orifices

MP-312 Liver Model

An economical way to study the basic structure of the liver. The complex vessels network in the opened liver, displayed in different colors of the model: hilus vessels, extra - hepatic and intra - hepatic bile ducts.



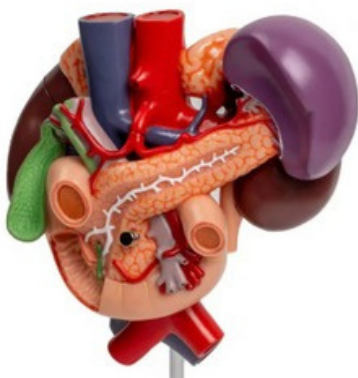
MP-311 Model Of Liver, Pancreas And Duodenum

This model is made to study the structure of liver, spleen, blood vessels and pancreas. External structure is illustrated as well as the pancreatic duct of the pancreas. Also shows the abdominal aorta and inferior vena cava. Life size - dissectible into 3 parts.



MP-311-1 Model Of Spleen, Pancreas And Duodenum

This natural size model reproduces the pancreas, the spleen and the duodenum. The pancreas is open to show the entire pancreatic duct. The duodenum is partially dissected to expose its nice structure.



MP-Kidney Model with Rear Organs of Upper Abdomen, 3 parts

This meticulously crafted model illustrates the anatomy of the human urinary and digestive systems. The upper abdominal organs are positioned in their natural anatomical arrangement and can be detached from the kidneys. The model showcases numerous anatomical features of the kidneys and the posterior organs.

MP-A6100 Human Kidney Model With Adrenal Gland



Shows the anatomical structure of kidney, including cortical substance, medulla, proximal convoluted tubule, distal convoluted tubule, connecting canal, mammillary ducts, minor renal calices, greater renal

calices, pelvis of ureter, ureter, interlobular arteries and vena, renal arteries and vena, adrenal gland.
2 times enlarged model.

MP - 310-3 Human Kidney with Adrenal Gland



This model features the kidney with adrenal gland, renal and adrenal vessels and upper portion of the ureter.

- Dissected into 2 parts to reveal the cortex medulla, vessels and renal pelvis. Life size.

MP- Kidney Model Large



This colorful and anatomically accurate model depicts a longitudinal section of the right kidney. All important structures

for student and patient education are shown. The kidney is three times of the life size.

MP-332 Kidney, Nephron & Glomerulus Model



This 3 models set shows the basic structure of the kidney. First model is a kidney, illustrates adrenal gland, cortex, medulla, pyramids with papillae, renal pelvis and blood vessels.

Second, a nephron enlarged 120 times, shows a renal tubules, a collecting tube system and Henle's loop. Third Malpighian corpuscle with the Bowman's capsule, 700 times life size.

MP-332 Female Urogenital System



The model shows the kidney, ureters, urinary bladder, uterus, accessories of uterus, vagina, ovary membrane, ligaments, uterus ligaments and its artery ETC. Made with high quality PVC plastic, size 20 x 20 x 50 CM.

MP-331 Male Urogenital System



This model of male urogenital system is intended for schools as visual aid in teaching physiology and hygiene to help the students to understand the external features of the urogenital system of the kidney, urinary bladder, penis and testicle. Made with high quality PVC plastic, size 20 x 20 x 50 cm .

MP-301 Magnified Human Larynx Model



- A functional model, On base 3 times enlarged.
- Shows movements of epiglottis & cartilages in the voice box.
- Shows the morphology and structure of the respiratory tract and phonetic organ. Magnified Human Larynx PVC Model.
- Size 11.5 X 11 X 24 cm, 3-parts Dissectible

MP-5 Parts Larynx with Tongue and Teeth



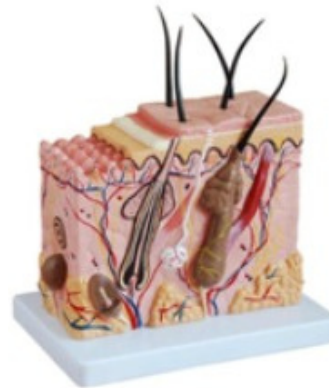
- This model consists of 5 parts, and shows the anatomical structure of laryngeal cartilages, laryngeal muscles, and laryngeal cavity.
- All parts are in life size

MP-Larynx with Trachea



Left half of the larynx removable.
Shows: cartilages, trachea with bronchial tree, and the individual segmental bronchi. Ligamentous apparatus, muscles, and relief of mucous membrane of the larynx are shown. Thyroid gland represented. Separates into 2 parts.

MP-313 Enlarged Skin Model



This model shows a section of human skin in three dimensional forms. Hair, sebaceous and sweat glands. Receptors nerves and vessels are shown in detail. 70 times enlarged.

MP-A12006 Appendix And Caecum Model



Made of advanced PVC mounted on stand, natural size shows wall of the caecum and appendix separated into two parts. shows 17 positions.

MP-317 Expansion Model Of Urinary Bladder

This model shows the male urinary bladder with the prostate gland surrounding the urethra. Dissected medially to expose both internal and external structures.



MP-436A Magnified Uterus Model



With the coronal section this model shows: Uterus. The cervix is divided into a supra-vaginal portion and a vaginal portion. The ligaments of the uterus are eight in number.

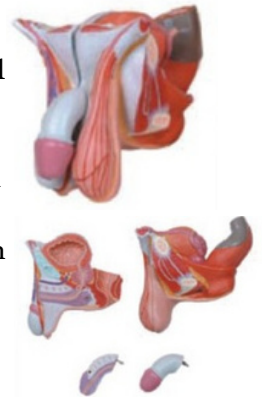
MP-A15105 Female Genital Organs Model

This female genital model is dissected and mounted on a stand. Shows internal and external female genital organs. Model consists of 4 parts. Shows 40 positions, made with advanced PVC plastic.



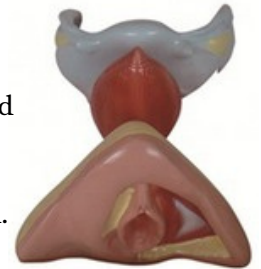
MP-A15102 Male Genital Organs Models

This male genital model is dissected in median and mounted on a stand. Shows the penis, prostate, bladder, seminal vesicle, spermatic cord and inguinal canal and base. Shows 72 positions, made with advanced high quality PVC plastic.



MP-429 Female Internal And External Organs Model

It shows the entire female genital organs including uterus, uterus appendix (fallopian tube, ovary and its ligament teres uteri, ligament ovary proprium), vagina and the structure of external genital organ. Part of uterus and vagina are dissected to show its internal structures. Size: life-size. Made with high quality PVC plastic.



MP- 417 Contraception Guidance Model

This model shows the anatomical section of female genitals. It can be demonstrated how to put the pessary, how to put contraceptive medicine membrane or tablet, how to put in and take out the IUD and how to make induced abortion etc..



MP- A6120 Female Perineum Anatomy



Show the scope of female perineum, the anterior urogenital triangle (urogenital region), the posterior triangle anus (anal region) and the Anatomical structure of perineum (including the genital organ, perineal muscles, nerves and blood vessels,etc); 20 positions are displayed.

MP-A6119 Male Perineum Anatomy

1. Show the scope of male perineum, the anterior Urogenital triangle (urogenital region), the posterior triangle anus (anal region) and the anatomical structure of perineum (including the genital organ, perineal muscles, etc); 12 positions are displayed.



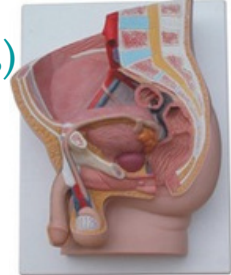


MP-331A Human Male Pelvis Section (1 Part)

This median section model shows the normal position of male genital organs with bladder and rectum in the male pelvis. Made of PVC.

MP-331B Human Male Pelvis Section (2 Parts)

This median section model shows the normal position of male genital organs with bladder and rectum in the male pelvis. Dissectible into 2 parts.



MP-332A Human Female Pelvis Section (1 part)

The median section model shows female genital organs with bladder and rectum. The abdominal and pelvis muscles are detailed shown. Made of PVC plastic.

MP-332B Human Pregnant Female Pelvis Section Model (Life Size)

This median section of human pregnant female pelvis model shows normal position of child before birth. Removable fetus. Made with high quality PVC plastic. Size 38 x 25 x 40cm.



MP- Human Pregnant Pelvis Section with Fetus (Miniature)



This miniature median section of human pregnant female pelvis model shows normal position of child before birth. Removable fetus. Made with high quality PVC plastic.

MP-326 Foot Anatomy Model 3 Parts (Normal, Flat and Arched Foot)

This model shows the anatomical structure and the distal end of tibia of normal, flat and arched foot. Set of 3 PCS, life sized. It is convenient, practical, flexible for doctor to use, For students and teachers to understand human anatomy.



MP- Transparent Dental Implantation Tooth Model



Great model for dentists to communicate with patients. Useful equipment for students learning and ideal for treatment planning discussions with patients. The teeth model is made of good quality resin material, which is decent also super quality non-toxic eco-friendly material. This is very useful demonstration model for implanting missing teeth with bridge

MP- Transparent Enlarged Dental Implant Anatomy Mode

This dental implant model is enlarged to help explain the risks of neglecting tooth loss, specifically when dental bridges need to be used as well as implants. Dentists can provide a demonstration of the structures of the tooth, like the crown and root. The model provides a visual medium for the patient to review the implant analysis with their dentist and explains how the implant will interact with the surrounding natural teeth.



MP-Adult Gum Teeth Model



This human teeth model is great tool for students to learn or demonstrate children's teeth brushing.

MP-Dental Care Model



Shows anatomical structure of teeth and nerves on the lower jaw.

MP - Tongue with Teeth Model



1. Shows the tongue structure, separated into 3 parts
2. Size: Life size,
3. Material: Advanced PVC

MP-1301A Digestive System Model (Indian)

This life size model of human digestive system model is made of HSP resin. Relief model of a human digestive system in median section dissectible into 3 parts. Duodenum, caecum and rectum re opened. Rectum is unfolded. Transverse colon and front half of the stomach is removable. The model features the oral cavity, pharynx, esophagus, stomach, liver with gall bladder, pancreas, IG tract and spleen Mounted on a sturdy wooden base.



MP-1307 Nervous System Model (Indian)

This nervous system model shows a schematic representation of the central and peripheral nervous system. This is an excellent model to study the structure. Mounted on a base. Size 810 x 300 x 50mm
Material : HSP Resin



MP-1302 Circulatory System Model (Indian)

Made of high grade HSP Resin having long durability. Mounted on sturdy wooden frame for easy display. Size : 40x80 cm, Beautifully painted in bright colors.



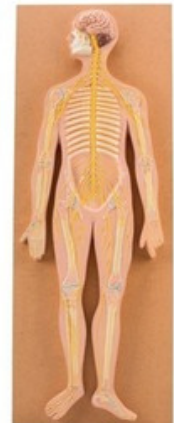
MP-315 Digestive System Model (Imported)

Digestive system model Life size digestive system model, demonstrates the entire digestive system in graphic relief. Digestive system feature : nose, mouth, cavity and pharynx, esophagus, GI tract, liver with gall bladder, pancreas and spleen. The duodenum, caecum and rectum of the digestive system are opened. Dissectible into 3 parts. Mounted on baseboard. Material PVC Plastic



MP-A18101 Nervous System Model (Imported)

This model of nervous system is made of advanced PVC and paint. The model shows the structure of central nerves, peripheral nerves, including spinal nerves radiated from central system to other parts of body. 33 positions are displayed.



MP-A16001 Circulatory System Model (Imported)

Introduces main arteries and veins of the body. 81 positions are displayed. Material: Advanced PVC



MP-18102 Spinal Cord in Spinal Canal Model (Imported)

- The model shows the brainstem and the spinal cord as well as the nerve branches up to the coccygeal plexus. On the left side the sympathetic trunk with its connections to the central nervous system are shown. Spinal Cord in the Spinal Canal Model in one piece, mounted on a green base plate. As seen from the ventral side, this model shows the brainstem and the spinal cord as well as the nerve branches up to the coccygeal plexus.
- Material: PVC Plastic



MP-A16011 Lymphatic System Model (Imported)



This lymphatic system model shows the component and structure of the lymphatic system and it displays around 63 positions. This model is made of advanced high quality PVC plastic.

MP- A180H Sympathetic System Model (Imported)



This model shows the outlook of automatic nervous system, including sympathetic nervous system and parasympathetic nervous system. The sympathetic one shows in yellow color and parasympathetic one in red.

Material : PVC PLastic

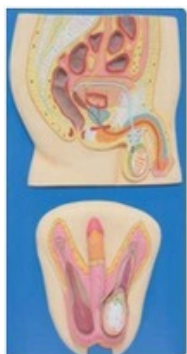
MP-1306 Respiratory System Model (Indian)



A relief model of the respiratory system, including the or nasal cavity, larynx and trachea, primary bronchi and bronchial tree. The upper respiratory tract is sectioned along the medial sagittal plane. An alveolus with blood vessels.

Size:55 x 39 x 5cm, Material PVC Plastic

MP-1304 Male Reproductive System Model (Indian)



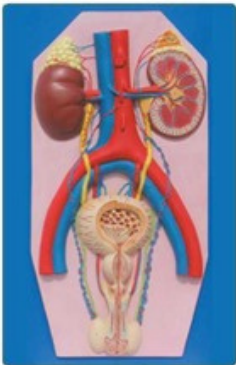
Mounted on sturdy wooden frame for easy display. Size : 40x80 cms. Well illustrated and informative. Beautifully painted in bright colors. Model is accurately made from actual specimen references, photographs and encyclopedia reference under expert guidance. Model is a great teaching tool for anatomy lessons. Material HSP Resin

MP-1305 Female Reproductive System Model (Indian)



Mounted on sturdy wooden frame for easy display. Size: 40x80 cm. Well illustrated and informative. Beautifully painted in bright colors. Model is accurately made from actual specimen references, photographs and encyclopedia reference under expert guidance. Model is a great teaching tool for anatomy lessons. Material HSP Resin

MP-1303 Human Excretory System Model



Size 40 x 80 cm, made of HSP resin. Delivered on a wooden baseboard for easy display. It shows the structures of the retroperitoneal cavity which includes: descending aorta, inferior vena cava, renal veins and arteries, ureter, urinary bladder cut open to show trigone and other vessels and prostate gland. Left kidney and left adrenal gland in section. Model also shows testis and penis in section. The model has anatomical details that make it great teaching aid. 36 key features marked.

MP-333 Urinary System Model



The model shows the structures of retroperitoneal cavity, pelvis with bones and muscles, inferior vena cava, aorta with its branches, upper urinary tract, kidney with adrenal gland, ureter, bladder ETC. Dissectible into 4 parts.

MP - Endocrine System Model

MP-1308E Fetal Circulation Model



A one-piece, semi-schematic model of the fetal heart, lungs, liver, placenta and umbilical cord. The aorta and hollow vein have different colors and markings to represent the circulation and flow direction of the blood. Mounted on base



MP- A42008 Fetus With Viscus and Placenta



This model shows a female fetus at the end of the pregnancy with a placenta and umbilical cord. Separated into 13 parts as follows: Placenta, umbilical cord, abdominal cover, lungs, heart, thymus, diaphragm, liver, stomach, intestine and body.

MP-H2 Multifunctional Nursing Manikin (Female)



- Hair and face washing, hair combing and sponge bath
- Mouth cavity care
- Endotracheal intubation
- Oxygen inhaling
- Nasal feeding
- Gastrolavage
- Intracardiac injection
- Closed chest cardiac resuscitation
- Mammary Nursing
- Thoracic, Liver, Celiac, Medulla, Lumabar, Deltoid puncture
- Chest drainage
- Deltoid subcutaneous injection
- Vein puncture and vein injection
- Blood transfusion (Arm)
- Vastus lateralis injection
- Female urethral catheterization
- Female bladder irrigation/ clyster
- Buttocks intramuscular injection

MP-H2M Multifunctional Nursing Manikin (Male)



- Hair and face washing, hair combing and sponge bath
- Mouth cavity care
- Endotracheal intubation
- Oxygen inhaling
- Nasal feeding
- Gastrolavage
- Intracardiac injection
- Closed chest cardiac resuscitation
- Thoracic, Liver, Celiac, Medulla, Lumabar, Deltoid puncture
- Chest drainage
- Deltoid subcutaneous injection
- Vein puncture and vein injection
- Blood transfusion (Arm)
- Vastus lateralis injection
- Male urethral catheterization
- Male bladder irrigation/ clyster
- Buttocks intramuscular injection

MP-H100S Full Functional Male Nursing Manikin (Unisex with Organs)



Widely used in first aid and emergency rescue as well as the regular nurse training. This model is made according to the normal position and activities of the human body as much as possible. Each model is equipped with male and female genitalia, can exchange to use. Model of the arms, thigh and buttock have injection pads available training. This model is equipped with internal organs, not only for basic nursing, medical care available to use also.

Bed bathes

Head nursing: face washing, eye drops, ear drops, oral care.

Holistic Nursing: sponge bath in bed, sitting sponge bath, wear clothes, cold or heat therapy.

Oxygen inhaling.

Nasal feeding.

Gastric lavage.

Tracheostomy care.

Study chest anatomical structure of vital organs.

Arm intravenous injection, transfusion training.

Injection Next Deltoid.

Intramuscular injection.

Male and female catheterization.

Enema.

Percutaneous transrenal stomy.

Study abdominal cavity anatomical structure of vital organs.

MP-H120 A & B Advanced Nursing and Wound Care Manikin



Full-body lifelike male manikin. Specifically designed for professional nursing training. High quality manikin provides wide range of exercises possible including both first aid and emergency situations.

Head care: hair washing, face washing

• Irrigation of the eyes and ears

• Oral cavity care

• Oral cavity and nasal cavity intubation

• Oxygen inhalation

• Oral and nasal feeding

• Lavage

• Organs structure of thorax

• Vein puncture and injection, transfusion,

• Deltoid injection

• Puncture of thorax, abdominal cavity,

• liver medulla and lumbar

• Enema

• Urethral Catheterization for male and female

• Irrigation of bladder for male and female

• Ostomy Irrigation

• Gluteus injection

• Organs structure of

abdominal cavity

• General care, bed bathes,

dressing and undressing

• Wound care: disinfection,

dressing change, binding,

hemostasia.

MP-H-106 Basic Nursing Manikin



MALE VERSION ALSO AVAILABLE

Features:

- | | |
|---|--|
| <ol style="list-style-type: none"> 1. Hair and face washing 2. Eye and ear washing and administering 3. Mouth cavity and artificial teeth care 4. Breast care 5. Postoperative care for tracheotomy 6. Oxygen inhaling 7. Nasal feeding 8. Gastrolavage 9. Ostomy care 10. Chest Cavity Puncture (no liquid) 11. Lumbar puncture (no liquid) | <ol style="list-style-type: none"> 12. Venipuncture, injection, blood transfusion (Arm) 13. Deltoid subcutaneous injection 14. Buttocks intramuscular injection 15. Vastus lateralis injection 16. Female bladder irrigation 17. Female urethral catheterization 18. Enema 19. Holistic nursing: flexible limbs joints, sponge bath, clothes changing, cold & hot therapy. |
|---|--|

MP- H-105 Advanced Unisex Nursing Manikin with Organs



MANIKIN WITH EXCHANGEABLE BREAST AND GENITALIA



- | | |
|--|---|
| <ol style="list-style-type: none"> 1. Hair and face washing 2. Eye and ear washing and administering 3. Mouth cavity and artificial teeth care 4. Pupil observation: one normal, the other mydriasis 5. Postoperative care for tracheotomy 6. Oxygen inhaling 7. Nasal feeding 8. Gastrolavage 9. Tracheal intubation via mouth | <ol style="list-style-type: none"> 10. Venipuncture, injection, blood transfusion (Arm) 11. Deltoid subcutaneous injection 12. Vastus lateralis injection 13. Buttocks intramuscular injection 14. Enema 15. Male/Female urethral catheterization 16. Male/Female bladder irrigation 17. Ostomy care 19. Holistic nursing: flexible limbs joints, sponge bath, clothes changing, cold & hot therapy. |
|--|---|

MP/H-103M Advanced Nursing and Wound Care Manikin (Unisex)

Features:

1. Hair and face washing
2. Eye and ear washing and administering
3. Mouth cavity and artificial teeth care
4. Endotracheal intubation
5. Tracheotomy care
6. Oxygen inhaling
7. Oral and nasal feeding
8. Gastrolavage
9. Venipuncture, injection, blood transfusion (Arm)
10. Deltoid subcutaneous injection
11. Vastus lateralis injection
12. Thoracic cavity and lumbar puncture
13. Enema
14. Female/male urethral catheterization
15. Female/male bladder irrigation
16. Ostomy
17. Buttocks intramuscular injection



18. Holistic nursing: sponge bath, replacing clothes
19. Limbs joints : bend ,rotation and upper or lower movement * Trauma modules for evaluation and care:
 - 1) Abdomen wall incision and suture incision
 - 2) Thigh section and suture incision
 - 3) Tear of the thigh skin
 - 4) Infectious ulcer of thigh
 - 5) Foot trauma
 - 6) Amputation stump of upper arm
 - 7) Amputation stump of leg.

MP/H-107F Multi-functional Nursing Manikin (Female)



1. Hair and face washing, hair combing
2. Eye and ear washing and administering
3. Oral care and artificial teeth care
4. Tracheotomy care
5. Oxygen inhalation
6. Nasal feeding and gastric lavage
7. Pupil observation: one normal, the other mydriasis
8. Ostomy care
9. Lumbar puncture (without liquid)
10. Arm venipuncture, injection and transfusion (Arm)
11. Deltoids subcutaneous injection
12. Lateral thigh and buttocks intramuscular injection
13. Urethral catheterization (male/female)
14. Bladder irrigation (male/female)
15. Enema
16. Buttock ulcer care
17. Diabetic foot care

18. Holistic nursing: sponge bath, replacing clothes, cold and hot therapy
 19. Limbs: much more flexible joints, easier for movement * Trauma modules for evaluation and care: disinfection, wound enswathing and hemostasis, including:
 - 1) Chest incision and suture demonstration
 - 2) Abdominal wall incision and suture demonstration
 - 3) Thigh incision and suture demonstration
 - 4) Thigh laceration
 - 5) Amputation stump of upper arm
 - 6) Amputation of leg
 * CPR simulation (Male) * Detachable left and right breasts and supports breast care (Female)
- FUNCTIONS:- Artery Pulse and BP**

MP-J110 Advanced Trauma Nursing Training Manikin



Full body life-like male manikin specially designed for professional trauma nursing care. High quality manikin provides wide range of exercises:

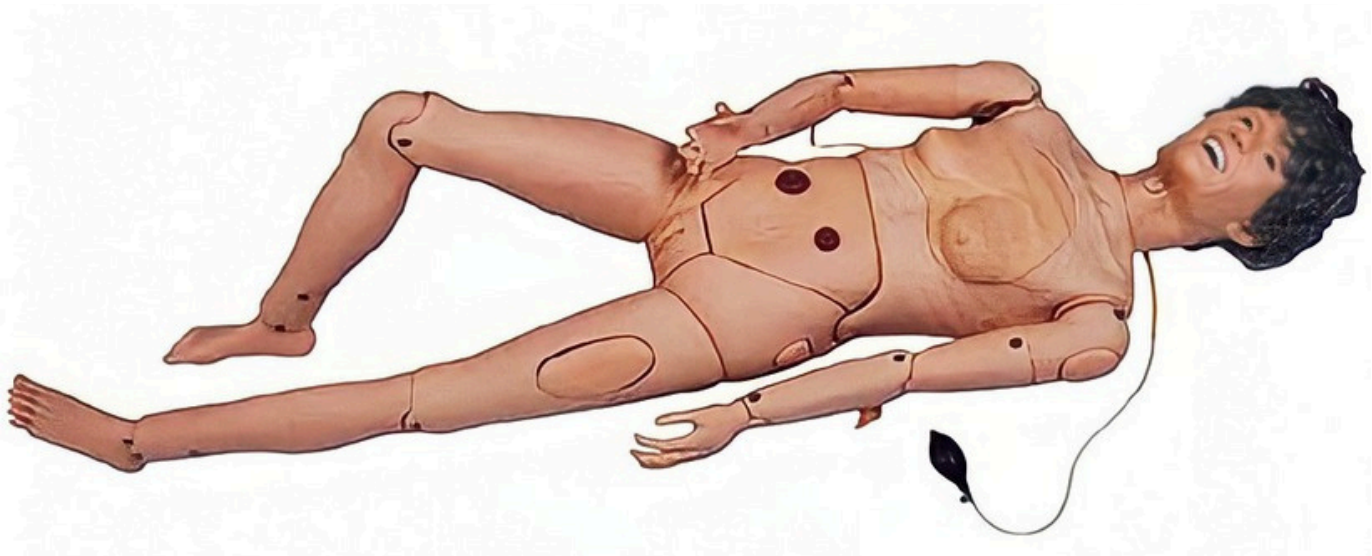
Trauma Nursing Skills:-

- Bed bathes, dressing and undressing
- Hair washing
- Face washing
- Irrigation of the eyes and ears
- Oral cavity care
- Oxygen inhalation
- Nasal feeding
- Lavage
- Oral cavity intubations
- Nasal cavity intubations
- Tracheotomy care
- Organs cavity of thorax
- Venipuncture and injection, transfusion
- Deltoid injection
- Male urethral catheterization
- Female urethral catheterization
- Gluteus injection
- Ostomy irrigation
- Organs structure of abdominal cavity

Trauma Evaluating Module

- opened fracture on right hand (including parenchyma, laceration, fracture and bone tissue exposure)
- gun wound in the right palm
- opened fracture in the right thigh bone
- closed tibia fracture on right leg and contusion wounds in left ankle and foot.
- opened numerous fracture of right upper arm
- opened clavicular fracture and contusion wound on the chesta wound in the abdomen with small intension
- evisceration
- compound femur fracture on left thigh
- metal pricking wound in left thigh
- opened tibia fracture of right leg
- opened fracture of right foot with truncating trauma on small phalanx
- burns in left forearm 1st, 2nd and 3rd degree
- truncating trauma on left thigh
- facial burns of 1st, 2nd and 3rd degree
- laceration in forehead
- the wound in jaw

MP-H220B Advanced Full-Functional Elderly Nurse Training Manikin (Female)



The manikin is designed according to the physiological characteristic of female old people for basic clinical nursing training. The product consists of full-body female elderly manikin and non-invasive blood pressure simulator; with about 50 kinds of nursing functions, made of imported PVC material, fine quality, environmental protection, realistic shape as human, easily washable; these help nursing workers understand and care for old people during the nursing process.

Hair and face washing
Pupil observation, Pupil LCD is CSTN pseudo-color, 65k color, RGB. Diameter range is 1-9mm. Simulate pupil states freely: normal, mydriasis, and myosis, etc
Eye and ear washing and administering
Removal and insertion of hearing aid
Mouth cavity and artificial teeth care
Endotracheal intubation, automatically monitor whether the tracheal intubation is correct or not through sensor; support auscultation to detect intubation site

Incision of trachea nursing
Sputum suction
Oxygen inhaling
Oral and nasal feeding
Gastrolavage
Venipuncture, injection, transfusion (arm)
Deltoid subcutaneous injection
Vastus lateralis injection
Thoracic cavity, abdominal cavity, liver, bone marrow and lumbar puncture
Breast nursing, mammary gland examination
Enema
Male/female urethral catheterization
Male/female bladder injection
Stoma drainage
Colostomy

Buttocks intramuscular injection
Large area of sacral ulcer
Cancer tumor contrast
Cleavage lines contrast
Holistic nursing: sponge bath, replacing clothes, cold and hot therapy
Realistic limbs joint, stiff simulated joints, truck may lean forward
Can sit in the wheelchair
Trunk- rotation, flexibility
Neck- rotation, flexibility, lateral curvature
Shoulder and buttock-endoduction, abduction, rotation, flexibility
Elbow-internal rotation, external rotation
Knee- internal rotation, external rotation

MP-H220A Advanced Elderly Fully Functional Nursing Training Manikin (Male)



The manikin is designed according to the physiological characteristic of old male(H220A) people for the basic clinical nursing training and non-invasive blood pressure simulator; with about 50 kinds of nursing functions; Basic nursing features:

- Hair and face washing.
- pupil observation.
- eye and ear washing and administering. removal of insertion
- of healing aid. mouth cavity and
- artificial teeth care.
- endotracheal intubation
- incision of trachea nursing
- sputum suction
- oxygen inhaling
- oral and nasal feeding
- venipuncture, injection, transfusion arm
- deltoid subcutaneous injection
- vastus lateralis injection
- throtic cavity, abdominal cavity, liver, bone marrow and lumbar puncture.
- enema
- urthral catheterization
- bladder injection
- male prostate examination
- stoma drainage
- colostomy
- buttocks intramuscular injection
- large area of sacral ulcer
- cancer tumor contrast
- cleavage line contrast
- holistic nursing: sponge bath, replacing cloths, cold and hot therapy.
- realistic limb joints , stiff simulated joints, truck may lean forward, can sit in a wheelchair
- truck- rotation and flexibility
- neck: rotation , flexibility and lateral curvature
- shoulder and buttock: endoduction, abduction, rotation, flexibility.
- elbow: internal rotation, external rotation
- knee: internal rotation, external rotation
- wrist: internal rotation, flexibility, stretching and bending.
- korotkoff sound volume in ten steps 0-9
- ankle: introversion, eversion, endoduction, abduction
- non-invasive blood pressure measurement
- systolic and diastolic pressure may be set individually in steps
- systolic pressure 0-300mmHg, diastolic pressure 0-300Hg.

MP- Limbs Fracture First-Aid External Fixation Simulation Standardized Patient



Features:

Simulates head trauma and limbs closed fracture, students can be familiar with symptoms of malformation, bony crepitus and abnormal motion and so on, and they can make diagnosis and treatment.

Master the operating skills of wounds rinsing, disinfection, binding up, restoration, fracture fixation and transport, which has great clinical meaning for surgical trauma first-aid skills training.

Trauma includes radius and ulna closed fractures (upper forearm), Tibia and fibula closed fractures trauma (lower limbs), and thigh compound trauma. The end of fracture is touchable, fracture-angle abnormality, and comes with feeling of bone friction.

Mandible trauma modules: open jaw trauma modules, and wound management can be done for the jaw.

Basic nursing function: I.V. Injection, urethral catheterization, etc.

All types of brace can be used with this manikin.

Can be widely used for emergency teaching demonstration and actual practice

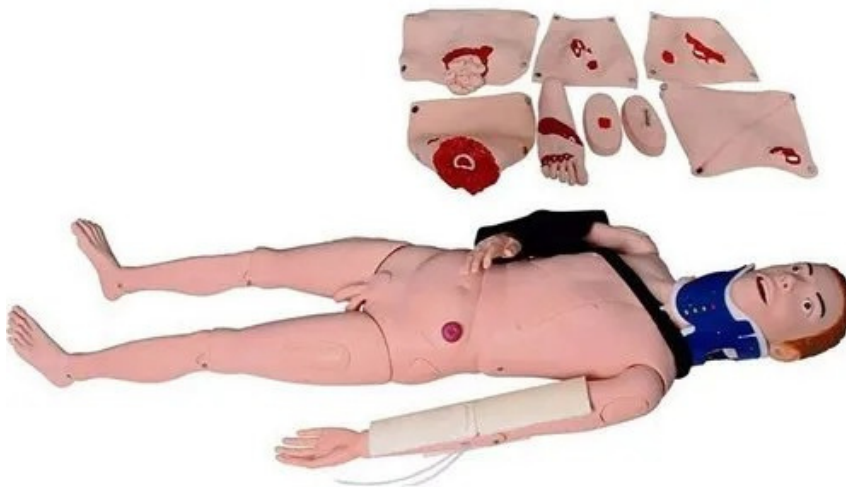
MP- FA6805 Advanced Trauma Evaluation Model

Features:

- Facial burn: 1st, 2nd and 3rd degree
- Laceration in forehead
- The wound in jaw
- Opened clavicular fracture and contusion wound on the chest
- The wound in abdomen with small intestine evisceration
- Opened humerus fracture of right upper arm
- Opened fracture of right hand (including parenchyma laceration)
- Gun wound in the right palm
- Opened fracture of right thighbone
- Compound femur fracture of left thigh
- Metal pricking wound in right thigh, Opened tibia fracture of right leg
- Opened fracture of right foot with truncating trauma on small phalanx
- Burns in left forearm: 1, 2, 3 degree
- Truncating trauma on left thigh
- Closed tibia fracture of right leg and contusion
- wounds in left ankle and foot



MP- J112 Standard Patient for External Fixation Training Simulation in First Aid of Limb Fracture



This product is the simulation nurse. It can be put in various positions according to the need, widely used in all kinds of first aid teaching and practical operation.

Features:

1. Simulate closed limb fracture trauma. Students can be familiar with the signs and symptoms of fracture and conduct first-aid external fixation training.
2. Simulation included closed fractures of radius and ulna in the forearm of the upper extremity, tibia and fibula in the lower extremity, and complex injuries in the thigh.
3. For perform the cleaning, disinfection, dressing, reduction, fixation and handling of the wound site training.

MP/H-107M Multi-functional Nursing Manikin (Male)

Artery Pulse, BP, CPR and Auscultation

1. Hair and face washing, hair combing
2. Eye and ear washing and administering
3. Oral care and artificial teeth care
4. Tracheotomy care
5. Oxygen inhalation
6. Nasal feeding and gastric lavage
7. Pupil observation: one normal, the other mydriasis
8. Ostomy care
9. Lumbar puncture (without liquid)
10. Arm venipuncture, injection and transfusion (Arm)
11. Deltoids subcutaneous injection
12. Lateral thigh and buttocks intramuscular injection
13. Urethral catheterization (male/female)
14. Bladder irrigation (male/female)
15. Enema
16. Buttock ulcer care
17. Diabetic foot care
18. Holistic nursing: sponge bath, replacing clothes, cold and hot therapy
19. Limbs: much more flexible joints, easier for

movement



Trauma modules for evaluation and care: disinfection, wound enswathing and hemostasis, including:

- 1) Chest incision and suture demonstration
 - 2) Abdominal wall incision and suture demonstration
 - 3) Thigh incision and suture demonstration
 - 4) Thigh laceration
 - 5) Amputation stump of upper arm
 - 6) Amputation of leg
- * CPR simulation (Male) *

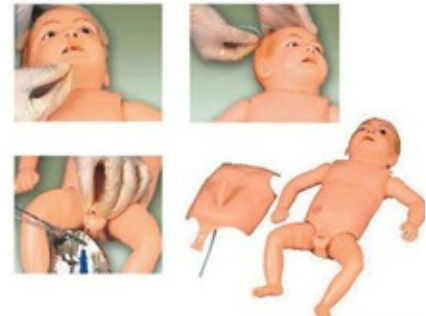
MP/XDT-101 ECG Manikin (Standalone)



1. The manikins features flexible and elastic skin with marks of the auscultatory site, anti-aging, sturdiness and durability.
2. Controlled by micro-computer; a variety of normal and abnormal ECG signals are stored in the manikin; each ECG signal is showed by the analog-to-digital code.
3. Connect with the common ECG or ECG monitor when using, and connect the lead wire of the ECG machine to the relevant parts of limbs and chest respectively
4. For teaching practice and assessment, operate the code button on the manikin panel and input the ECG code according to your need, then ECG waveform will be automatically described via the ECG machine and monitor
5. Realistic waveform and adjustable heart rate.

MP-H130 Advanced Nursing Baby Unisex

- Movable head, neck, hand and foot, replaceable chest-skin
- Cephalic Venipuncture
- Umbilical Venipuncture
- Oral and Nasal Intubation Nursing
- Care Of Gastrolavage, Enema, and Urethral Catheterization
- Ostomy
- Deltoid Subcutaneous Injection and Buttocks Intramuscular Injection
- Holistic nursing: sponge bath, replacing clothes, lactation and diaper changing



MP-FT333 Advanced Multifunctional Child Nursing Manikin Unisex



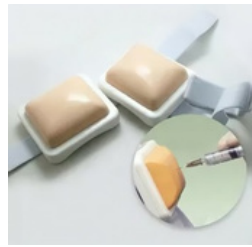
1. Pupil observation. Bilateral Pupil states: normal, mydriasis.
2. Operations of child care: full body bandage exercise, bathing, changing clothes, hair combing, eye washing and administering, otic drops and irrigation, mouth cavity care, blood collection of finger and TBtest.
3. Airway management: realistic mouth, nose, tongue, gum, pharynx, larynx, esophagus, epiglottis, trachea and tracheal ring, can practice tracheal intubation, sputum suction, oxygen inhaling.
4. Oral and nasal feeding
5. Gastrolavage
6. Venipuncture, injection, transfusion (Arm). There is an obvious feeling when needle penetrates into vein. And blood flash back indicates proper insertion.
7. Intramuscular injection in bilateral deltoid, bilateral vastus lateralis and bilateral buttock.
8. Enema, placement of rectal suppository
9. Urethral catheterization
10. Holistic care: sponge bath, replacing clothes, cold and heat therapy
11. Limbs joints: Bend, rotation, upper and lower movement.
12. Bathing and bandaging activity
13. Ostomy nursing of ileum, colon and bladder.
14. Tibial bone marrow puncture: simulate the process of bone marrow puncture, obvious body surface symbol. Simulated bone marrow would outflow in the case of correct puncture.

MP-S12 Intramuscular Injection Model



This model consists of skin, muscle layer. Wearable design makes it a convenient simulator for training.

MP- S12A Intramuscular Injection Pad



The model consists of skin, subcutaneous tissue and muscle layer. Can be used for intradermic injection, hypodermic injection and intramuscular injection. Wearable design. Injection liquid can be injected into it, squeeze the pad after use.

MP-HS17 Advanced Insulin Injection Training Pad



This injection pads has a fabric elastic band to tied to the upper arm or thigh, increase the realism of the operation. Wearable design. Simulator training.

MP-442 IV Injection Pad



Wearable design Replaceable skin and blood vessel Venipuncture I.V., transfusion, blood sampling, etc. Repeating practice on same spot.

MP - Pocket SC Injection Practice Pad with White Thicker Sponge



Subcutaneous injection practices are available on both the top and bottom sides, two layers of silicone skin. Sponge in the middle layer, good for water absorption and drying. Durable and affordable for students and injection courses.

MP- Intradermal Injection Practice Arm Simulator, 58 ID Spots



The injection arm simulator provides realistic training for intradermal injection through in-time small blisters or skin welt feedback. Used for nurse training and medical education.

MP- Adult Left IV Practice Hand Kit



Allows trainees to practice and perfect IV injection, venipuncture, and blood sampling techniques on dorsal veins. The highly-simulated IV hand equipped with portable infusion stand, is great for nursing training and other medical education fields.

MP- Injection Training IV Arm Sleeve, Snap-on



Greatly simulates the blood vessels' position on the forearm. Realistic simulated dermatoglyphics. Snap-on design. Make the IV arm sleeve more convenient and advanced for injection & phlebotomy training.

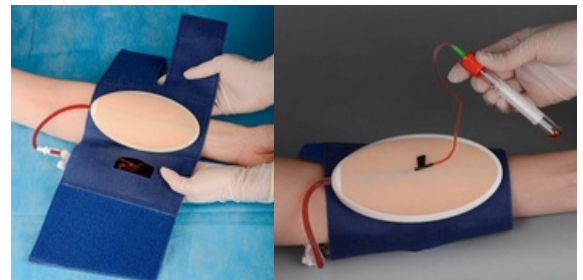
MP - Dorsal Hand IV Trainer, Wearable/Portable for Practice



Comes with wearable velcro and a pocket design. Enables IV practice on the dorsal hand more conveniently, safely, comfortably, and affordable than other IV trainers.

MP - One-Way IV Injection Practice Pad Model, Wearable on Forearm

One-way design. Ideal for venipuncture and IV catheter practice but not infusion. Consists of a wearable velcro and an IV injection pad embedded with a grey silicone tube, which becomes transparent outside and connected to an 80ml liquid bag.



MP - Pocket Intradermal (ID) Injection Pad with 32 Training Spots



Simulate the skin wheal and bleb well. Ideal for nursing students and nurses to practice intradermal (ID) injection techniques. Lightweight and friendly for a backpack.

MP - Detachable IV (Intravenous) Sleeve Trainer for IV Injection Practice



The detachable IV sleeve trainer provides safe, realistic, affordable intravenous (IV) injection training. Can be used on a live person or manikin. The silicone pad represents the soft tissue and the plastic part prevents needle puncture and injury.

MP-434 Injectable Training Arm



- This arm model can demonstrate the following items: Vein phlebotomy on elbow forearm, Vein injection on elbow forearm, Vein blood transfusion on elbow forearm, Vein liquid transfusion on elbow forearm. Also includes muscular injection on deltoid on the side of the upper limb

MP- Injection Training IV Arm



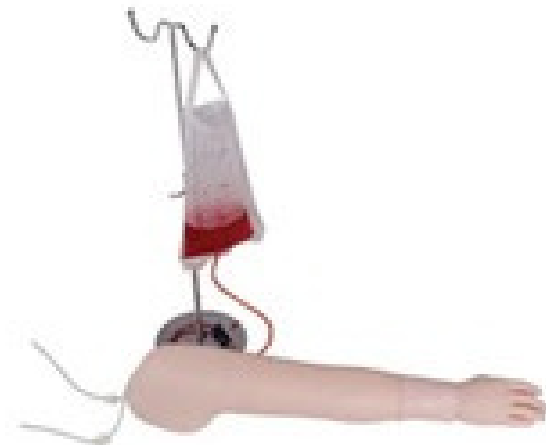
The highly simulated IV & Phlebotomy arm provides a realistic multi-venous system(veins) for trainees to be trained in locating desired veins. A great aid assistant in injection, infusion, venipuncture, and phlebotomy courses.

MP-HS2 Multifunctional Adult IV Training Arm Model



This is a full-size adult arm, designed for practice of venipuncture and injection. The manufacturing quality of the arm should provide many sessions of training. Items Included, Full-size arm (1), Adjustable transfusion stand (1), Set of transfusion ((1), Replacement skin (1), Replacement deltoid injection pad (1), Rubber tube clamp

MP-NS6005 Multifunctional Intravenous Injection Arm Model



Simulates an adult arm with veins and arteries attached inside. The durable material help to make a very good skin touch feeling. Various Intravenous injection training could be practiced through the veins attached to this simulator, including cephalic vein, basilic vein, median cubital vein, median antebrachial vein, and dorsal venous rete of hand. Intramuscular and hyper dermic injection.

MP-HS39 Full Functional Vein Injectible Arm



Venous access: Basilic V Cephalic V Digital V Dorsal Metacarpal V Median Basilic V Accessory Cephalic V Extensive venipuncture system Median Antebrachial V Median Cephalic V Median Cubital V Thumb V. This revolutionary training arm provides complete venous access for IV therapy and phlebotomy, plus sites for intramuscular and intradermal injections. An extensive 8-line vascular system allows students to practice venipuncture at all primary and secondary locations, including starting IVS and introducing OVER the Needle IV Catheters. The venous system simplifies setup with only one external fluid bag supplying artificial blood to all veins simultaneously. surface.

The dorsal surface of the hand includes injectable metacarpal, digital, and thumb veins. The antecubital fossa includes the median cephalic, median basilic, and median cubital veins. Venipuncture can also be performed along the basilica, cephalic, accessory cephalic and median antebrachial veins. Intramuscular injection may be performed in the deltoid muscle and intradermal injection sites are located in the upper arm.

Intramuscular injections into the deltoid muscle are enhanced by the soft, lifelike skin and by the natural bony landmarks in the region. Intradermal injections using distilled water will create characteristic skin welts at designated sites on the upper arm. The realism of the Advanced Venipuncture and Injection Arm is truly amazing. The soft, flexible fingers are molded separately with extreme attention paid to every detail—right down to the fingerprints! Flexion of the wrist helps students develop manipulation skills. A discernable “pop” is felt when entering the veins. The molding process reproduces the fine details of the skin to make the arm look and feel alive. Valves in the veins can be seen and palpated on the skin.

MP-1005 Arm Artery Puncture & Intramuscular Injection Training Model



1. Lifelike adult male arm reproduction with infusible arteries designed for training the proper arterial puncture procedure for blood gas analysis.
2. Deltoid intramuscular injection

MP- Advanced Subcutaneous Injection Belly Simulator



Realistic abdomen with advanced soft silicone to replicate the authentic tactile sensation of the skin. Can be worn on humans for subcutaneous injection self-administration training.

MP- Diabetic Injection Belly Trainer



The soft stomach replica will be a valuable tool for teaching patients or students how to properly insert and rotate insulin pump infusers. Also perfect for diabetics to practice and overcome the fear of self-injection in daily life.

MP- Pediatric IV Arm for Venipuncture & Phlebotomy Training



The pediatric IV simulation arm is so soft and perfect for newborn arm IV injection, catheter, and phlebotomy training. Help nervous nursing students, nurses, and doctors build confidence before performing IVs on real infants' arms.

MP- Pediatric IV Leg for Venipuncture & Phlebotomy Training



The newborn-sized infant IV leg is an exciting training aid for practising and demonstrating IV injection, IV phlebotomy, and IV catheter of the infant. Good for learning intravenous cannulation in neonates. Easily get realistic pediatric IV experience.

MP- Infant Scalp Intravenous (IV) Injection Practice Model



Asimulated infant head with a head venous vascular network. Clearly visible scalp veins are ideal for IV practice on a baby's scalp.

Build nurses' and doctors' confidence before scalp vein catheterization and infusion.

MP-4034 Newborn Vein Injection Arm Trainer



Replica of the newborn arm, life size, realistic and anatomically accurate.
1. Used for vein puncture and vena superficialis transfusion training.

2. The veins of elbow and arm can be punctured.
3. There's obvious "POP" feeling when the needle penetrates into the vein, and simulative blood flashback indicates proper insertion.

MP-HS8 Multifunctional Child IV Arm



Simulates the arm of child (4 years old). Life like arm reproduction with multi-vein system designed for peripheral intravenous therapy.

MP-H2034 Child Artery Puncture Arm



Replica of a child hand; Manually squeeze the bulb to simulate the radial pulse and fix the injection site. Supports radial artery puncture, haemostasia and transfusion, and there will be obvious "Pop" feeling when the needle penetrates into the artery, and blood backflow indicates proper puncture.

MP-S6 Electronic Upper Arm Intramuscular Injection Model



Imitate shoulder and upper limb structure of adult simulation, compact design lightweight, and closer to the real environment. At the same time, the skin texture is very realistic, is not obvious needle marks. Red light and sound will alarm if injection is too deep or the position is wrong. Allow the injection of simulated liquid discharged from the drain pipe.

MP-431 Buttocks Intramuscular Injection Model



There's a mark to show the right position for injection. The inject pad can be taken out for replacement.

MP-431A Electronic Buttocks Injection Training Model



Alarming sounds indicate whether the injection is correct. This model can be worn on.

MP-HS10C Adult Intramuscular Injection Training Manikin



Structure of left gluteal: osteal marks, gluteal muscles, ischiadic nerve and veins Left gluteal can be taken off. So it is easy to observe internal structure and make sure position of chiadic nerve and veins. Gluteal intramuscular injection training

MP-HS10B Advanced Buttocks Intramuscular Injection Simulator



Realistic facial injection mannequin with female facial specific details. Perfect for facial injections, cosmetic procedures, acupuncture, and makeup practice. Wholesale and customization options available.

MP-L60 Lumbar Puncture Model



The waist 1 and the waist 2 are naked and easy to observe the shape of the spine. Waist 3 - Waist 5 is a functional position with obvious body surface

markings for easy identification.

The following operations can be performed: 1 spinal anesthesia; 2 epidural anesthesia; 3 anesthesia of the appendix. There is a sense of blockage when the needle is inserted. Once injected into the relevant area, there will be a sense of fall and simulate cerebrospinal fluid outflow.

Simulator can be vertical and horizontal puncture.

MP- Intraosseous Injection model (Basic Level Type)



MP- Intraosseous Injection Model IO Infusion & Injection Trainer



MP- Intraosseous Injection Model with Detachable Inner Bone (Basic Simulation Model)



The Intraosseous (IO) Tibia Trainer offers a realistic medical and emergency training experience for IO injection techniques. It provides options to customize the skin tone, internal bone, and logo, making it ideal for bulk orders, medical education, and personalized branding.

MP-L65A Infant Bone Marrow Puncture Model



Provide infant legs tibia puncture operation and realistic sense of needle; there is an obvious feeling when needle penetrates into veins and outflow of simulated bone marrow; Recovery of pinhole on facies osse; Provide four side puncture of the tibial rod.

MP-L65B Bone Marrow Puncture and Femoral Venipuncture Simulator



Helps intraosseous infusion training. With femoral venipuncture simulator, femoral venipuncture can be simulated too. There are realistic anatomy of whirbone and shinbone. If intraosseous puncture is succeeded, you can feel a "pop" And liquid return can be obtained. The puncture structure can be replaced. 10 sets of puncture bone are supplied with the model.

MP-LV18 Surgical Suturing And Bandage Simulator

The simulator provides commonly used surgical incisions, which simulate all kinds of female thoracic and abdominal incisions, tube drains and amputation stump. Can practice wounds treatments of washing, disinfecting, changing dressing, bandaging and etc. The skin is dry, soft and flexible, allowing the bandages to adhere better. Features: Thyroidectomy, Mid-sternal split - with two chest tube drains, Right mastectomy - with simulated drain, Right cholecystectomy - with simulated T-tube, Laparotomy, Appendectomy, Left colostomy, Right ileostomy, Abdominal Hysterectomy (transverse incision), Left nephrectomy (thoraco-abdominal incision), Right nephrectomy (oblique incision), Laminectomy, Sacral decubitus ulcer - stage 2 and Right thigh amputation stump



MP-LV8 Surgical Knotting Skill Training Model



The material is transparent plexiglass. So instruction and training can be observed directly. Almost all kind of surgical knotting methods can be performed on this model. Simulative veins can be replaced.

MP-LV20 Abdominal Cutting And Suturing Training Simulator



Abdominal cutting and suturing training, Abdominal wall anatomy: skin, subcutaneous tissue, abdominal muscle and peritoneal membrane. Inflate the balloon in peritoneal cavity and the abdominal wall will be under tension. The aim for the trainee is to enter the peritoneal cavity and close it again without bursting the balloon(damaging the intestines).

MP-LV1 Advanced Surgical Suture Arm



1. With features of lifelike shape and realistic touch, the model suitable for cutting, suturing and bandaging exercise
2. With wonderful elasticity and flexibility of skin, each model can be used for hundreds of times.

MP-LV2 Advanced Surgical Suture Leg



- 1.It can be simulate basic surgical skills such ascutting, suturing, bandaging and etc.
- 2.With wonderful elasticity and flexibility of skin,each model can be used for hundreds of times.

MediPrakt® Suture Pads have 3 distinct layers- skin (epidermis), fat, and muscle. Designed to offer no tears while suturing. Can be used to practice suturing, knot tying, suture removals and wound closures. Material offers real human tissue feel.

MP- Suture Practice Pad Without Precuts



MP-CS6206 Suture Practice Pad with Stand



MP- Suture Pad with 8 cuts



MP- Suture Practice Pad 19 Precuts



MP- Suture Practice Pad with 14 Precuts



MP- Suture Practice Pad with 31 Precuts



MP- Laparoscopy Training Suture Pad



MP- Suture Practice Pad with Instrument Kit



MP-H-502 3 Layer Silicone Pad with Arch Design



The arched suture pad simulates the human skin, resembles human flesh, and makes wounds DIY possible for medical students. Be able to practice suturing any wounds. Feel free to get discounts for bulk orders, or get our professional one-stop solution.

Practice advanced techniques and suturing lacerations on the more delicate surfaces of body. Our products are engineered to give a realistic suturing experience.

MP-CS6206 Suture Practice Pad with Stand



MP-SP005 Dental Suture Pad



MP-SP002 Simulation Ear Suture Pad



MP-SP003 Simulation Nose Suture Pad



MP-SP004 Simulation Eye Suture Pad



MP-SP001 Simulation Lip Suture Pad



MP-Cleft Lip for Suturing



MP- Endo Trainer



MP-Community Health Bag with 38 Items



MP- Double Layer Bowel



Featuring two distinct layers of tissue, each with a different feel, this model has a 23 mm ID and 30 mm OD. Available in Short (3 inch), Regular (6 inch), or Long (12 inch), this model is perfect for learning and practicing end-to-end and end-to-side bowel anastomosis procedures, as well as other basic general surgery skills.

MP- Femoral Arteries



Available in Small (5 mm ID), Medium (8.5 mm ID), and Large (10 mm ID), each vessel has a 1-1.25 mm wall thickness and comes in 6 inch lengths.

MP- Hollow Organ - Stomach



Hollow Organ-Stomach model provides a unique experience in suturing hollow organs. Because hollow organs require a different suturing technique than skin closures do, this model offers an opportunity to experience a variety of suturing situations. Though simulated to look like a stomach, this model is meant to train general hollow organ suturing.

MP- Single Layer Bowel



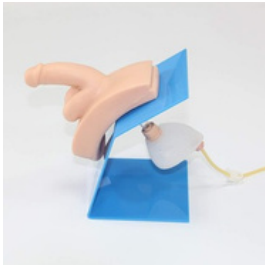
Available in Small (22 mm ID, 6"), Large (28 mm ID, 6"), or Long Large (28 mm ID, 12"), this model is perfect for learning and practicing end-to-end and end-to-side bowel anastomosis procedures, as well as other basic general surgery skills.

MP- Microvessels



Available in 1-5 mm OD, each vessel has a 0.1-0.5 mm wall thickness and comes in 2.5 or 3 inch lengths. These models are perfect for learning and practicing micro end-to-end and end-to-side anastomosis procedures, as well as other basic and advanced plastic, orthopedic and neurosurgery skills.

MP-28E Dressed Male Catheterization Model (Small)



Demonstrate and practice male urinary catheterization. Teach sterile technique and insertion and removal of urinary catheter. Practice preparing the perineal area for the procedure. New material that has realistic feel and flexibility. 16 Fr catheter can be used to demonstrate balloon inflation procedures. Fluid reservoir allows for urine output upon successful completion of the insertion procedure. Mounted on a training stand and can be used on a tabletop or for patient simulation.

MP-28F Dressed Female Catheterization Model



Demonstrate and practice female urinary catheterization. Teach sterile technique and insertion and removal of urinary catheter. Practice preparing the perineal area for the procedure. Features include: New material that has realistic feel and flexibility. 16 Fr catheter can be used to demonstrate balloon inflation procedures. Fluid reservoir allows for urine output upon successful completion of the insertion procedure. Mounted on a training stand and can be used on a tabletop or for patient simulation.

MP-H17E Male Catheterization Training Model



General urethral Catheterization process can be operated. There is resistance when advancing the catheter through mucosal fold, bulb of urethra and intra urethral sphincter.

MP-H17F Female Catheterization Model



General urethral Catheterization process can be operated. There is resistance when advancing the catheter through mucosal fold, bulb of urethra and intra urethral sphincter.

MP- NS6070 Electronic Unisex Catheterization and Enema Model



Male urethral catheterization: Lift the penis, simulating extending the urethra bend (curvatura prepubica). Gently introduce the catheter into the meatus and slowly advance it through the urethra (through cavernous body of urethra, membranous urethra and prostatic urethra). If the operation is correct, the green light will power on. Advance the catheter about 18~20cm and the red light will power on. The return of urine into the collection tubing signifies that the catheter is in the proper position. Female urethral catheterization: Gently introduce the catheter into the meatus and slowly advance it proximally 4cm through the urethra. Enema: Introduce the catheter into the anus and advance it about 10cm through the anal canal.

MP- Female Urinary Catheterization Trainer



Female Urinary Catheterization Model is designed to teach urinary insertion techniques on female patient. Clear base, accurate female urethral anatomy - ensuring accurate procedures. Ideal for nursing and medical students

MP- Male Urinary Catheterization Trainer



Male Urinary Catheterization Model is designed to teach urinary insertion techniques on male patient. Clear base, accurate male urethral anatomy - ensuring accurate procedures. Ideal for nursing, medical students, and school education

MP- Transparent Male Catheterization Simulator



Features:

1. We design this simulator basing on the normal human anatomy.
2. The external genitalia are lifelike. Students can observe the organs in the pelvis, such as bladder, rectum.
3. The whole catheterization process can be seen because of the transparent abdominal wall.
4. The resistance will be felt when intubating, just as in real human. The external Genitalia can be replaced.

MP- Transparent Female Catheterization Simulator



Features:

1. We design this simulator basing on normal human anatomy.
2. The external genitalia are lifelike. Students can observe the organs in the pelvis, such as bladder, uterus and rectum.
3. The whole catheterization process can be seen because of the transparent abdominal wall.
4. The resistance will be felt when intubating, just as in real human. The external genitalia can be replaced.

MP-1A Child Trachea Intubation Model



Anatomically accurate mouth, larynx, trachea, oral and nasal intubation. The neck should be backward in order to open airway. Insufflating air into the tube so as to verify whether the tube position is right.

MP-J15 Neonate Intubation Training Model



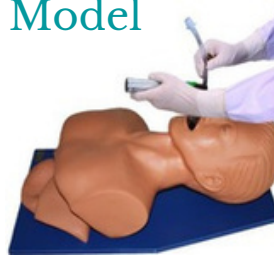
Realistic anatomy of neonate. Oral and nasal intubation. Lifelike material. Directly observe the expansion of lungs and stomach by insufflating air into the tube and stomach so as to verify if the tube position is right.

MP-3A Infant Trachea Intubation Model



Realistic anatomy: tongue, pharynx, epiglottis, larynx, chordae vocales, trachea, Oral and nasal intubation, Lifelike material, Simulate head tilt to operate conveniently, Directly observe the expansion of lungs and stomach by insufflating air into the tube and stomach so as to verify if the tube position is right.

MP-J5S Electronic Trachea Intubation Model



Accurate anatomical marks. Oral or nasal cavity intubation. Wrong operation, stomach inflation or laryngoscope compressing the teeth will activate warning, prompting One proper pupil and another mydriasis.

MP- 0009 Suction Training Manikin



1. The suction catheter skills training through nose and mouth.
2. Suction tube and Yankin catheter can be inserted into nasal cavity and oral cavity, and simulated sputum suction.
3. Suction

tube can be inserted into tracheal opening site through tracheal cannula, and intrabronchial suction can be practiced.

4. By opening the one side part of the face, the position of inserted tube can be confirmed, and the anatomical structure of nasal cavity, oral cavity and cervical part can be learned.

MP-J55 Multifunction Airway Management Model



Anatomically accurate full size mouth, tongue, airway and esophagus. Perfect for placement of endotracheal tubes. Respiratory sound auscultation. Oral, nasal intubation. Oral, nasal suction.

MP-J50 Airway Intubation Simulator



Accurate anatomical marks. Oral or nasal cavity intubation. It allows observing the suction position from side face so as to instruct correct method of the intubation skill. Wrong operation, stomach inflation or laryngoscope compressing the teeth will activate warning prompting.

MP-H-331 Infant Airway Management Model



This realistic model of infant airway intubation replicating the anatomical structures of infant nasal and oral airways, can be used for teaching and training of endotracheal intubation in safe environments.



MP- Simple Adult Airway Management Model

MP- Cricothyrotomy Task Trainer for Emergency Airway Management



The cricothyroidotomy model comes in anatomically accurate structure and provides an accurate representation of the cricothyroid membrane, allowing for effective practice of incision techniques vital for establishing ventilation in emergency airway management.

MP- FA5058 Tracheotomy and Endotracheal Intubation Model



Standard tracheotomy position, touchable trachea for locating cutting position
 Accurate structure: thyroid cartilage, cricoid cartilage, crico-thyroid membrane
 Practice percutaneous thyrocricoid puncture, cricothyrotomy, tracheotomy
 Different cuttings: vertical, horizontal, cross shape, "U" shape, reverse "U" shape
 Replaceable trachea and neck skin.

MP- Adult Tracheotomy Care Model



Precise anatomy: pharynx, epiglottis, trachea, esophagus, position of tracheotomy, cricoid and left, right bronchial trees. Tracheotomy care training Sputum suction training, suction via oral and nasal cavity, tracheostomy tube suctioning, clean and care of tracheal cannula.

MP- Child Tracheotomy Care Model



Precise anatomy: pharynx, epiglottis, trachea, esophagus, position of tracheotomy, cricoid and left, right bronchial trees. Tracheotomy care, Suction via oral cavity, Clean and care of tracheal cannula.

MP-70-1 Nasogastric Feeding and Tracheal Intubation Care Simulator



Features:

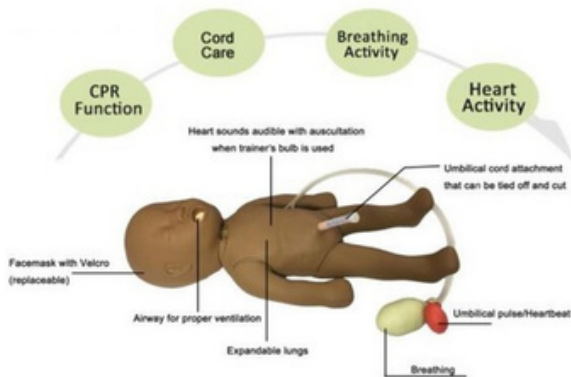
Hair and face washing, Eye and ear washing and administering Mouth cavity care, Endotracheal intubation, Oxygen inhaling, Nasogastric intubation, Sputum suction, Oral and nasal cavity intubation, Carotid artery pulse.

MP - Transparent Nasal Feeding Training Manikin



1. Replica of the upper body of an adult male with a transparent plastic front cover for thorax and abdomen part, which makes it easy to observe the positions and morphological structures of those organs, and the entire process how to insert the gastric tube and how to do gastric lavage.
2. Design based on normal human body's anatomical structure, high simulation and available feeling of resistance similar to performing gastric intubation on a real person.
3. Supports gastric lavage operation in different body positions (supine position, left-lateral position, sitting position); supports gastric lavage by means of gastric tube, electric suction device and gastric machines.
4. Supports basic nursing function, laboratory examination and simulates vital signs.

MP/J-MBaby Newborn Baby Simulator



MP/J-MBaby is a newborn baby resuscitation simulator which can be used to practice both standard care and resuscitation of newborns. This simulator has been designed with anatomical landmarks and is designed to be realistic in both size and appearance. Further, it can simulate the presence/absence of heart sounds, umbilical cord pulse and spontaneous breathing. This simulator comes with a durable storage bag and training accessories as detailed below-

1. CPR: supports BVM to mouth, obvious chest rise; and external chest compression;
2. Simulates airway opening
3. Umbilical cord cutting and nursing
4. Equipped with pressure bulbs, manually squeeze the red one, there will be umbilical artery pulse; squeeze the green bulb, there will be spontaneous respiration.

MP-FT335 Advanced Full Functional Neonatal Nursing & CPR Manikin



1. General care: change diapers, change clothes, mouth care, cold and hot therapy, bandaging;
2. Venous transfusion/puncture, arm veins include and Scalp vein includes.
3. Umbilical cord care: ligature of umbilical cord, umbilical venous intubation and transfusion;
4. Gastric intubation: detect tube position by means of auscultation; can practice gastrointestinal decompression, nasal feeding, gastric lavage, etc.
5. Bone marrow puncture: practice tibial puncture; outflow of simulative bone marrow shows proper puncture operation; drug liquid can be injected into and can practice transfusion operation;
6. CPR operation training: Supporting multiple breathing ways by mouth to mouth, mouth to nose and simple respirator to mouth; electronically monitor compression; frequency and volume of blowing, compression times, frequency and depth, blowing and compression can be training separately.

MP- J140 Baby Obstruction / Infant CPR Simulator

- Full-body lifelike baby specifically designed for professional training
- Heimlich manoeuvre
- Foreign-body airway obstruction- This feature provide a realistic condition for releasing of a foreign body obstruction through back blows and chest thrust techniques
- Artificial respiration and external chest compression
- Simulation of natural airway, chest expand when airway opened
- Airway opening and chest compression
- Accurate anatomy, proportion of the standard live baby design

PP-AM-100M Prestan Adult CPR Manikin with Rate Monitor

- Lightweight with fast and simple setup.
- Revolutionary CPR Rate Monitor that allows for instant rate and depth feedback to both the instructor and student.
- Easy to insert lung-bag speeds manikin setup
- Tiltable head illustrates how to open the airway
- Audible click with correct compression depth
- AHA & ARC Approved
- Manikin resists dirt, grime & grease



Professional Adult Series 2000 Manikin

The same high quality, realistic Professional Adult Manikin is now available with Advanced Feedback including Rate, Depth, Recoil, Ventilation and Hands-Off Time via a Bluetooth® enabled PRESTAN CPR Feedback app available on both Apple and Android devices. Fully compliant with current industry guidelines, including the Heart and Stroke Foundation of Canada's February 2021 *Use of Feedback Devices in Resuscitation Training Courses Policy* and the most recent AHA Integrated Feedback Directive.



PP-IM-100M Prestan Infant CPR Manikin With Rate Monitor

- Sculpted body contours and realistic skin feel help prepare students for real life rescues.
- Lightweight with fast and simple setup.
- Revolutionary CPR Rate Monitor that allows for instant rate and depth feedback to both the instructor and student.
- Easy to insert lung-bag speeds manikin setup
- Head simulates the way an actual infant's head would move.
- Tiltable head illustrates how to open the airway
- Audible click with correct compression depth

AHA & ARC Approved Manikin resists dirt, grime & grease



PP-CM-100M Prestan Child CPR Manikin With Rate Monitor



Lightweight with fast and simple setup.
 Revolutionary CPR Rate Monitor that allows for instant rate and depth feedback to both the instructor and student.

Easy to insert lung-bag speeds manikin setup
 Tiltable head illustrates how to open the airway
 Audible click with correct compression depth
 AHA & ARC Approved

Manikin resists dirt, grime & grease

Prestan Adult Ultralite Manikin



The PRESTAN Ultralite Manikin is our most portable manikin, easy to transport & ship and simple to set up, use & clean.

Fully compliant with current industry guidelines, including the most recent AHA Integrated Feedback Directive
 This durable manikin offers an affordable method for CPR training, with all the quality and realism you expect from PRESTAN.

PP-AFM-100M-MS Prestan Professional Female Manikin Medium Skin



The PRESTAN Professional Female Manikin is designed to transform CPR/AED training, improve CPR survival rates in women, encourage dialogue & breakdown barriers, and eliminate gender bias in CPR administration.

PP-AMP-100M-MS Prestan PRO+ Adult CPR Training Manikin



With the introduction of the new PRO+ Adult Head, PRESTAN is enhancing realism with a functional nasal airway. When administering breaths, the chest will rise only when proper head tilt chin lift is performed and the nose is fully pinched, or with the use of a Bag Valve Mask.

MP-CPR10150 Advanced Infant CPR Training Manikin



Simulating standard open airway

- External breast compression:
 1. display device and alarm device Indicator light display of correct and wrong compression ; alarm of wrong compression;
 2. Intensity display of correct (1-2 cm) and wrong (<1cm or >2cm) compression; alarm of wrong compression
- Artificial respiration (inhalation): display device and alarm device
 - Inhalation <30ml or > 50ml, wrong indicator light display and alarm prompting; Inhalation between 30-50ml right indicator light display;
- Inhalation too quickly or too much result in air entering into stomach; indicator light display and alarm prompting
- Ratio of compression and artificial respiratory: 30:2 (one person) or 15:2 (two persons)
- Operating cycle: one cycle includes five times of 30:2 or 15:2 ratio of compression and artificial respiration. Operation frequency: at least 100 times per minute
- Operation methods: exercise operation
- Examination of brachial artery response: pinch the pressure ball by hand and simulate brachial artery pulse
- Working conditions: Input power is 110-240V

MP- CPR10160 Advanced Child CPR Training Manikin



- Simulates standard open airway
- External breast compression: display device and alarm device
 1. Intensity display of correct (2 - 3 cm) and wrong (<2 cm - >3 cm) compression; alarm of wrong compression
 2. indicator light display of correct and wrong compression
- Inhalation < 150 - 200 ml or >200ml, wrong indicator light display and alarm prompting; inhalation between 150 - 200 ml right indicator light display.
- Inhalation too quickly or too much result in air entering into stomach; indicator light display and alarm prompting.
- Ratio of compression and artificial respiratory: 30:2 (one person) or 15:2 (two persons).
- Operating cycle: one cycle includes five times of 30:2 or 15:2 ratio of compression and artificial respiration. Operation frequency: at least 100 times per minute.
- Operation methods: exercise operation.
- Examination of brachial artery response: pinch the pressure ball by hand and simulate brachial artery pulse.
- Working conditions: Input power is 110-240V.

MP-H-201 Five Year Old Child Nursing Manikin with CPR



Features:

1. Simulate pupils: one normal and the other mydriasis for pupils contrast teaching demonstration
2. Simulates artery pulse including carotid pulse, radial pulse and femoral pulse; supports tracheotomy care.
3. Comes with realistic mouth, nose, tongue, throat, esophagus and trachea, supports trachea cannula via mouth and oxygen inhalation, etc.
4. Nasal feeding: insert the nasal feeding tube via the nose for gastrointestinal decompression, nasal feeding and gastric lavage.
5. CPR: support ventilation ways: mouth to mouth, BVM to mouth; electronic monitoring of insufflation frequency and volume, compression frequency and depth; insufflation or compression can be trained separately.
6. Venous transfusion, including arm veins, femoral veins and dorsal veins of foot.
7. Subcutaneous injection at bilateral deltoids, and intramuscular injection at vastus lateralis muscle and gluteus maximus.
8. Supports male/female urthelial catheterization and enema operation; and the genitals are replaceable.
9. Ileostomy, colostomy and bladder stoma care.
10. Bone marrow puncture: puncture via tibia, where medicine can be injected.

MP CPR Training Manikin



Simulates standard, open airway, external breast compression, intensity display of corrects. The yellow indicator light indicates a less deep compression; red light indicates a too deep compression; a green light and buzzing sound indicates compression of correct depth.

MP- CPR10280 Advanced Adult CPR Training Manikin with Monitor and Printer

- Simulates standard open airway, external breast compression
- Display device and alarm device Indicator, light display of correct and wrong compression
- Alarm of wrong compression Intensity display of correct (at least 5 cm) and wrong (5 cm<) compression
- Alarm of wrong compression Artificial respiration (inhalation)
- Display device and alarm device Inhalation <500-600 ml or > 600 ml, wrong indicator light display and alarm prompting Inhalation between 500-600 ml right indicator light display
- Indicator light display open airway Inhalation too quickly or too much result in air entering into stomach, indicator light display and alarm prompting Ratio of compression and artificial respiration 30:2 (one or two person)
- Operating cycle One cycle includes five times of 30:2 ratio of compression and artificial respiration
- Operation frequency At least 100 times per minute
- Operation methods Exercise operation Examination of pupil response
- Myriads and myosis Examination of carotid response Pinch the pressure ball by hand and simulate carotid pulse
- Working conditions Input power is 110-240 V



MP- Advanced Full Body CPR Training Manikin



Features:

1. Accurate anatomical features, realistic feeling, natural complexion, and perfect appearance
2. Manikin connects to the electronic monitor via compression and ventilation duct.
3. Manikin vital signs: 1) Initial state: manikin's pupil mydriasis and no carotid pulse 2) After successful rescue: manikin's pupil recover, and carotid pulse begin self-pulsation
4. Manikin's left shoulder supports consciousness judgement, and the result can be printed on the report after operation
5. Simulate airway opening, and the relative green light on the monitor will be triggered once the airway is open.
6. CPR operating modes: CPR Training, CPR Popularization and CPR Assessment:
7. Electronic monitoring: the electronic lights monitor the airway opening, compression sites (including one correct position and four wrong positions), times of correct and wrong artificial respiration and external chest compression.
8. Bar code shows the volume of insufflation: correct value should be 500 - 600ml. 1) insufficient blowing, the bar code is yellow, 2) proper blowing, the bar code is green, 3) excessive blowing, the bar code is red. Bar code shows the compression depth: correct value should be 5cm - 6cm. 1) Insufficient compression depth, the bar code is yellow, 2) proper compression depth, the bar code is green, 3) excessive compression depth, the bar code is red. English voices prompts during the whole process and the volume is adjustable. Compression frequency: 100-120 times/minute Remote control can be used to reset, playback and simulate emergency call, pulse check, foreign body removal and breathing judgement, etc. Power state: adopts 220V external power source, which can be used for both manikin and electronic monitor.

Practiman Half-Body CPR Training Manikin

- CPR Training Manikin with Audible Feedback on correct depth of compressions (2 – 2.4”).
- Provides Practice for Chest Compression and Artificial Ventilation (Mouth-to-Mouth Respiration).
- Chest Rise with Artificial Ventilation With Audible ‘Clicker’ that Confirms Correct Compression Depth(2-2.4”).
- Correct Anatomical Landmarks. AHA 2015 Guidelines Compliant.



MP- CPR-017A Half Body CPR & Obstruction Training Manikin

- Implement standard: AHA(American Heart Association) 2015 guideline for CPR and ECC
- Simulation of normal airway obstruction
- Provide CPR operation practice ; simulation of airway opening and chest compression
- Simulation of the chest expansion when the airway is empty
- Simulation of the suffocation, foreign body obstruction in airway
- Can operate adult Heimlich maneuver
- Simulation of Carotid pulse
- Individual MOUTH/NOSE piece. replaceable; comes with 3 MOUTH/NOSE piece;



MP-CPR190 Half Body CPR Training Manikin with Sound Indicator



1. Simulate standard open airway
2. External breast compression, intensity display of correct (at least 5cm):
 - 1) Buzzing sound of correct compression intensity
 - 2) Alarming sound of wrong compression intensity
3. Artificial respiration (inhalation): the volume of inhalation is observed through observing the wave of breast;

MP-CPR195 Half Body CPR Training Manikin With Light And Sound Indicator



- Simulate standard open airway, External breast compression, intensity display of corrects (at least 5cm)
- The yellow indicator light display of correct compression position Buzzing sound of correct compression intensity, the green indicator light display
- Alarming sound of wrong compression intensity, the red indicator light display Artificial respiration (inhalation): the volume of inhalation is observed through observing the wave of breast;
- Operation methods: exercise operation

MP-CPR2000 Half Body CPR Training Manikin With Monitor



- Pupil demonstration: one mydriasis and the other normal
- Simulate standard open airway and simulate free movements of upper limbs
- External chest compression: display device and alarm device
- Artificial respiration (Inhalation): display device and alarm device 6.
- Operating period: Ratio of compression and artificial respiration:
 - 30:2 (one or two persons), complete 5 cycles.
- Compression frequency: 100 - 120 times/minute, Compression depth: 5-6cm
- Working conditions: adopts 220V external power source

MP-15200 Half Body CPR & Intubation Training Manikin With Monitor for CPR



- Pupil response : Bilateral pupils contrast observation
- Carotid artery response: pinching pressure the ball to simulate carotid pulse; Chest compressions: Standard airway open;
- Feasible three ways to open the airway, lift jaw with head back, lift the head and neck, lift jaw by hands ;
- Mouth resuscitation and ventilator-assisted breathing, effective artificial respiration has visible chest rise
- Simulate laryngeal mask airway and composite cannula can be inserted into the air way;
- Verify endotracheal intubation is correct or not : a catheter inserted into the trachea, lungs will swell (plastic bladder) when inflated; if the catheter is inserted by mistake esophagus, stomach will swell when inflated (plastic pouch).
- Observed pulmonary respiration Artificial ventilation Oral or nasal intubation and esophageal intubation
- Open the airway and practise from resuscitator bag to breathing mask or from resuscitator bag to the cannula. Respiratory tract is simple and can be replaced Easy to carry, suitable for field training.

MP-CPR Cube



- MP CPR CUBE is a learning simulator for cardiopulmonary resuscitation (CPR) training.
- It allows to learn chest compression using visual, auditory and tactile signals.

MP- Child Rescue Choking Vest



Provides a Realistic Method for Teaching
To train both beginners and more advanced students. Can also be used with black blows

MP- Adult Rescue Choking Vest



Provides a Realistic Method for Teaching
To train both beginners and more advanced students. Can also be used with black blows

Laerdal Little Anne QCPR

Little Anne QCPR is available with a gaming element and feedback technology. Helps instructors improve both CPR training quality, classroom efficiency and learner engagement.

Control in the palm of your hand.

Monitor up to six manikins at a time with the QCPR Instructor app.

Real-time CPR feedback.

Check how every learner is performing with feedback on depth, release, rate and ventilations.

Intelligent scoring and guidance.

Give every learner tips on performance and

improvements with intelligent scoring functionality.



Laerdal Baby Anne QCPR

- The 3-month-old Little Baby QCPR includes features like:
- Head-tilt with open/locked airway
- Feedback on hand positioning
- Visible chest-rise on ventilations
- See and feel the baby's ribs
- Landmarks, nipples, breast tip
- Limbs with realistic movement
- Durable construction with realistic length and weight
- 2 AA batteries will last for months and are easily changed.



Laerdal Junior Anne QCPR

- Little Junior QCPR allows an instructor to monitor up to six learners at the same time from the palm of their hand. The Race with QCPR App provides an easy-to-view performance summary that highlights which students may require further guidance. At a glance, you can see who is not compressing deeply enough, who is not compressing at the correct rate, and who is overventilating. Students can monitor their own performance with the Race with QCPR app or the tethered SkillGuide device.

- QCPR measurement and feedback technology enables:
 - Real-time feedback on compressions and ventilations
 - Post-training debrief, including overall scores and tips for improvement
 - Details on compression release, depth and rate, ventilation volume, and number of compressions, ventilations and cycles



XFT120C+ AED Trainer



- The XFT-120C+ AED Trainers are designed with a replaceable plug-in card allowing the device to be customized by uploading different language and scenario options.
- It is bilingual; also has a Remote Control function. With different cards, one unit can offer different language options.
- A metronome is added to the flashing lights when the unit is counting out the 2 minutes for CPR.
- The sound prompts 100 compressions per minute to help the trainers perform CPR properly.

MP-D0009 Mini AED Trainer



- It has no high-voltage capabilities, ensuring safety during training.
- The device has the function of Voice Broadcast and LED display (Work instructions, electrode pads direction, shock instructions, warning signs). And, when you toggle the switch, it can simulate the electrode pads connected or not connected.
- The device has voice prompts and LED indication during two minutes CPR pause time.

Prestan AED Ultratrainer



The PRESTAN AED UltraTrainer is our most compact, lightweight AED trainer solution with full customization options. The pads have an embedded 'switch' which senses that the AED. Trainer pads are attached to the manikin torso. Compatible with any CPR manikin. Can be used to train in both semi-automatic and fully-automatic versions The silicone base adhesive on the pads, coupled with the foam structure, ensure easy application & removal. Includes a scenario, volume control, and language button. The pads can be used at least 25- 30 times during CPR/AED classes.

MP- CPR With AED Combo



CPR:

Simulates standard, open airway, external breast compression, intensity display of corrects. The yellow indicator light indicates a less deep compression; red light indicates a too deep compression; a green light and buzzing sound indicates correct depth.

AED

- It has no high-voltage capabilities, ensuring safety during training.
- The device has the function of Voice Broadcast and LED display (Work instructions, electrode pads direction, shock instructions, warning signs). And, when you toggle the switch, it can simulate the electrode pads connected or not connected.
- The device has voice prompts and LED indication during two minutes CPR pause time.

LAERDAL- Mama-U Postpartum Uterus Trainer

The model has all relevant anatomical features like fundus, cervix and perineum along with possibility to extend the uterus (relevant for insertion of postpartum IUD). The uterine angle can be changed by applying pressure to the model. It is possible to practice “blinded” placements and lift cover of the uterus to evaluate placement. Together with Sister-U, Mama-U was designed to complement family planning trainings and act as counselling aids for healthcare workers.



LAERDAL- Sister-U Multi-Uterus Trainer

A multi-uterus trainer with realistic anatomy representing the uterus between pregnancies.

Sister-U can be used for a variety of interventions such as vaginal examinations, IUD insertion and removal, and for inspecting anteverted and retroverted positions of the uterus, as well as family planning and menstrual hygiene counselling.



LAERDAL - NeoNatalie Basic

NeoNatalie is realistic in size and appearance with natural weight and feel when filled with lukewarm water. Including features such as spontaneous breathing, palpable umbilical pulse, and crying.

NeoNatalie can be used for role-play scenarios such as normal post-birth care, standard resuscitation, and resuscitation measures including positive pressure ventilation and closed chest compressions.



LAERDAL - NeoNatalie Complete

Facilitates effective learning of standard newborn care and resuscitation measures. The low cost simulator is available with the affordable therapeutic tools NeoNatalie Suction and NeoNatalie Resuscitator. Includes: NeoNatalie newborn simulator; Simulation squeeze bulbs with tubings; Umbilical cord with connector; 2 Umbilical ties; 2 Sheets to simulate towels; Head cap; Transport/storage bag; Directions for use;

Additional items: NeoNatalie Resuscitator NeoNatalie Suction Training Stethoscope



LAERDAL - MamaBreast

MamaBreast facilitates training in the following: Proper breastfeeding positioning and attachment and expressing breast milk.

MamaBreast Breastfeeding Simulator 30 ml cup are included in the MamaBreast kit.



LAERDAL - PremieNatalie Preterm Simulator

Has realistic size and appearance for a preterm baby (1.6 kg, 32 week gestational age). Supports training in proper breast feeding positioning and attachment, correct nasogastric / orogastric placement. and tube feeding. Can be used with Nifty Feeding Cup to practice breastmilk cup feeding. Can use with MamaBreast Breastfeeding Simulator to practice essential newborn care and Kangaroo Mother Care.



LAERDAL- MamaNatalie Birthing Simulator

MamaNatalie is particularly realistic for training control of postpartum hemorrhage - the number one cause of maternal death during childbirth - and communication with the mother. MamaNatalie's features include: Realistic bleeding, Positioning and delivery of the baby, Delivery of the placenta (complete and incomplete) Fetal heart sounds, Cervix landmark, Urine bladder catheterization, Uterine massage (atonic and contracted uterus), Bimanual compression.



LAERDAL- MamaBirthie



MamaBirthie is a birthing simulator and skills trainer that is ideal for demonstrating the mechanics of birth and train skills including abdominal and vaginal examinations, normal birth, vacuum assisted delivery, shoulder dystocia and breech.

MamaBirthie can be used as a tabletop model for demonstration and skills training and can be worn during in-situ team simulation and training respectful care. MamaBirthie gives birth to BabyBirthie, a highly realistic newborn simulator.

Features:

- Accommodates various birthing positions.
- Skills trainer with anatomically correct landmarks.
- MamaBirthie is both a tabletop skills trainer and a realistic wearable simulation trainer
- Highly durable - can facilitate 3,000 births without the use of lubricants.
- BabyBirthie: A realistic articulated newborn manikin with fontanels and anatomical landmarks. BabyBirthie's soft head allows for realistic attachment of vacuum for vaginal assisted delivery and creates a chignon effect.
- The bony structure of BabyBirthie makes it possible to identify the important landmarks in breech and shoulder presentations.
- Management of malpresentation including breech and shoulder dystocia.
- Realistic fetal head, birth canal, and pelvic floor facilitates natural rotation of the head as it descends.
- Comes with cervix inserts of 4, 6, and 8cm dilatation and effacement for skill training on vaginal examination.

MP-A42004 Embryo Model



This embryo model is mounted on stand. Made of advanced high quality PVC, 4 weeks old embryo model, shows 12 positions.

MP- A42010/1 Human Placenta Model



This human placenta model is mounted on stand. Shows the structure of placenta and relation between placenta and umbilical cord. Made of advanced PVC plastic, 7 positions are displayed.

MP-Fallopian Tube and Ovary Model



This 2-part, 5X life-size model shows the anatomy of the human fallopian tube and ovary. The follicles are shown at different stages of maturation. from the primary ovarian follicle to the corpus albicans.

A primary follicle is cross-sectioned, to illustrate the inner structure, the oocyte, zona pellucida and granulosa cells.

MP-A41003 Ovary Model



This model of ovary consists of 8 parts and mounted on stand. Shows ovary, primary and secondary ovarian follicles, ovum, ovulation, ovum, corpus luteum and corpus albicans

. It demonstrates the procedure of ovum's development. Shows 10 positions.

MP-A42002 Human Fertilization and Early Embryogeny Model



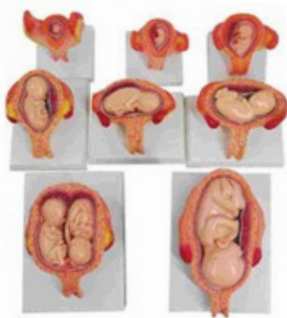
This model of human fertilization and early embryogeny shows the development from ovum to the fetus in third month. 16 positions are displayed. Made from advanced high quality PVC.

MP-A42001 Fertilization Process Simulator

This fertilization process stimulator is made from high quality HSP resin. Two frontal sections of female reproductive organs showing fertilization process. Mounted on a sturdy wooden base, 23 features marked.

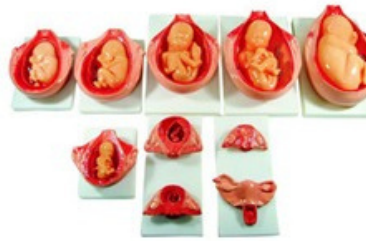


MP-414A Development Process of a Fetus (Half Size)



Shows the development of ovum to the fetus in 7 months. Set includes models of: 1st month embryo, 2nd month embryo, 3rd month embryo, 4th month fetus (breech position), 5th month fetus (transverse lie), 5th month fetus part 2nd (transverse lie), 5th month twin part 3rd (normal position), 7th month fetus.

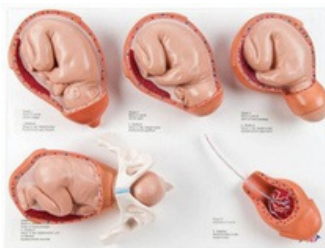
MP-414 Development Process of a Fetus (Life Size)



This set includes separate models of: Normal uterus shows the inner genitals, Placenta is shown for 1st month dummy, Embryo is shown which looks like human, Fetus reaches length of 9 cm in 3rd month,

Fetus reaches length of 16 cm in 4th month, Fetus reaches length of 25 cm in 5th month, Fetus reaches length of 30 cm in 6th month, Fetus reaches length of 35 cm in 7th month, Fetus reaches length of 40 cm in 8th month, Fetus reaches length of 45 cm and Fetus and uterus is shown in 9th month.

MP - Labor Delivery Model



Anatomical representation of human birth, but reduced in size to 50%. The birth model is supplied on baseboard. 5 stages of human birth, mounted individually on bases:

- Fetus in womb, cervix closed
- Fetus in womb, cervix open
- Fetus in womb, start of head passage
- Fetus in womb and pelvis, finish of head passage
- Placenta in the womb
- The human birthing process in 5 realistic anatomical models.

MP - Embryonic Development Process Model



The product shows in detail the process of sperm combining with egg to generate zygote. It shows the physiological characteristics of the embryo at different stages from the beginning of the zygote to maturity.

MP-A42007 Demonstration Model of Child Birth (3 Stages)

- The anatomical models demonstrate the delivery process.
- Consisting of uterus, fetus, placenta.
- The set of childbirth model displays 3 stages of labors.
- Each labor model have 3 major parts: pelvis, uterus, and fetus etc.
- 44 positions are numbered and showed in the manual.



MP-F5M Male Condom Training Model



This model shows erect penis with testicles and is used to quickly learn how to use a condom safely. The anatomical structure and its firmness are absolutely realistic, so that your students can train putting on and removing a condom in a realistic way.

MP-F9B Female Contraception Practice Simulator



This model simulates ante version uterus, fallopian tubes, labium, vagina and transparent abdominal wall cover in the pelvic cavity. expansion of vagina, the use of vaginal speculum, operation of female condom, contraceptive sponge and cervical cap.

MP-F5N IUD Training Model



This IUD training model is based on real anatomy of female genitalia; we designed this model for instructing or training of insertion or removal IUD. The uterus is in coronal section and covered with transparency plastic window. So students can directly observe the entire insertion or removal process.

MP- F3ND Plastic IUD Training Model



The IUD Practice Model is designed to function as a practice piece for the doctor or clinician. This piece enables doctors and clinicians the ability to practice insertion of; the IUD prior to actual patient insertion. This model is designed to give doctors and clinicians the feel of an actual uterus.

MP- Human Breast Cancer Self- Exam Model



Full size model is made of durable lifelike material with embedded lumps that simulate fibrocystic mass and typical tumor. Model also contains a lactiferous duct. Back side of education card shows locations of irregular masses. Base art shows common self-inspection patterns.

MP-F7A Breast Examination Model



Functional Characteristics: Palpation of galactophore malignant tumor, innocent tumor, lymphaden and lobulusaccremention;

Material Characteristics: 1. Made of Advanced thermoplastic; 2. Life like shape, skinny, pleasant to touch, durable. Ametabolic under disinfections and cleanout, convenient delivery. Size: 46*16*35cm N.W.: 2 kg

MP-409A New Style New Born Baby



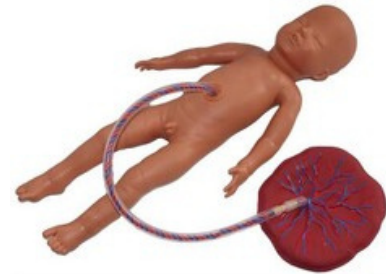
The size and configuration of this model is almost as same as the normal newborn baby. The head, upper limbs, lower limbs and all joints are flexible. It can demonstrate the characteristic of the newborn baby and all kinds of operations in clinic education: includes different parturition method, newborn baby bath etc.

MP - Advanced New Born Baby

Replica of a new born baby with all the limb movements



MP-409C Baby with Placenta and Umbilical Cord



Replica of a full-term baby, life size with palpable fontanels, umbilical cord and placenta. The umbilical cord can be assembled and disassembled easily.

MP - Birth Demonstration Model Set



The Childbirth Graphics Deluxe Childbirth Model Set is a complete childbirth teaching aid. What better way to demonstrate perineal stretching, the passage of the baby through the flexible pelvis, and the delivery of the placenta than by demonstrating the whole process with this complete set! Elastic straps on the perineum attach it to either a flexible vinyl pelvis or a cloth pelvis. The average-sized, full-term fetus fits through pelvis and the perineum. Snaps on the fetus and the umbilical cord connect the placenta, cord, and fetus together. Soft, yet durable cloth allow every piece to flex and show a variety of presentations and positions.

MP-Full Term Fetus Model



A great childbirth teaching tool, this 19" soft cloth fetal model, which represents a full-term baby, flexes to show all presentations and positions and features palpable anterior and posterior fontanels.

MP- Breast Examination Model



Features:
 Consists of 3 breast models at different sizes, with high simulation, soft skin and realistic touch feeling.
 Can be used for breast Examination

MP-14A Breast Inspection Model



Obvious anatomical marks, realistic texture. Demonstrates lesions including: Lump: hard texture, rough surface, can be considered as therioma texture is relatively soft,

flat surface, can be regarded as benign tumors
 Lymphatic metastasis: from armpit and neck, trainees can touch hard texture lymph nodes:
 Nipples changes: nipples are depressed, ulceration, bloody liquid overflow Skin changes: skin is depressed, orange-peel appearance, inflammatory breast cancer.

MP/F-0019D Electronic Inspection and Palpation of Breast Simulator



Contains the typical signs of various common breast tumors specifically targeting female breasts. Designed for bed diagnosis and self-examination. Made of imported plastic materials, soft texture and real touch. Breast zone provides different pathological features that can fully meet the needs of teaching. The model provides the following lesions: Nodules: The texture is hard and the surface is not smooth and can be considered as a malignant tumor. The texture is relatively soft and the surface is smooth and can be considered as a benign tumor. Lymphatic metastases: Lymph nodes with hard texture can be touched in the armpits and neck. Changes in nipples: rupture of nipples and spillage of bloody fluids. The electronic alarm device touches the corresponding part of the voice alarm

MP- Pathological Breast Self-Examination Model



The breast model simulates the texture and structure of the real pathological breast tissue of the left breast, and the realistic appearance and touch provide a breast self-examination experience.

MP- Lactating Breast Model



The breast teaching aid is malleable, has a similar feel to real breasts, and is designed for simulating and learning breastfeeding massage. OEM and customization accepted.

MP-H-141 Female Vulva Incision Suture Training Model



This female wound suturing model is designed for 3-set vulva incision demonstration and Episiotomy & Perineal Suture Training. Made of soft silicone and ideal for nursing institutes, medical colleges, and hospitals to use as a teaching & practice tool.

MP-F3B Vulva Suturing Training Simulator



Right, left or median posterior incision can be selected to exercise perineum cutting and suturing.

MP - Upgraded Episiotomy Suturing Simulator



The obstetrics simulation is made for gynecology teaching training. The simulated female vulva anatomy model provides realistic birth injuries incision and suturing practice and wound care after vaginal births.

MP-F3A Perineum Cutting and Suturing Training Simulator



Designed for practice of perineum cutting and suturing. The main structure of the simulator is a perineum, which is made of simulative foam, and the inner muscle is soft PVC. The simulator is mounted on a plastic framework, easy disassembly. There are handles in the back and bottom of the simulator to adjust tension of the perineum.

MP- Cervical Dilation Model

A simple tool for teaching midwives about cervical dilatation. It has an in built stand and comes with a cloth cover for protection. Made from molded plastic. 30cm x 20cm.



MP-20G Labour Delivery Model



This series model consists of six development phases and each part shows a state of prenatal cervix and birth canal. The whole model demonstrates the relations between the scope of the expanding of the orifice of the cervix, and the range of cervical tunnels, as well as the relation between the position of the head of the fetus and the square of ischial spine. The orifice of the cervix has no expanded, and the cervical tunnels haven't disappeared at all. The positional relation between the head of the fetus and the square of the ischial spine is -5. The orifice of the cervix has expanded 2 cm bigger, and cervical tunnels disappear 50%. The positional relation between the head of the fetus and the square of the ischial spine is -4. The orifice of the cervix has expanded 4cm bigger, and the cervical tunnels disappear absolutely. The positional relation between the head of the fetus and the square of the ischial spine is -3. The orifice and cervix have expanded 5cm bigger, and the cervical tunnels disappear absolutely. The positional relation between the head of the fetus and the square of the ischial spine is 0.

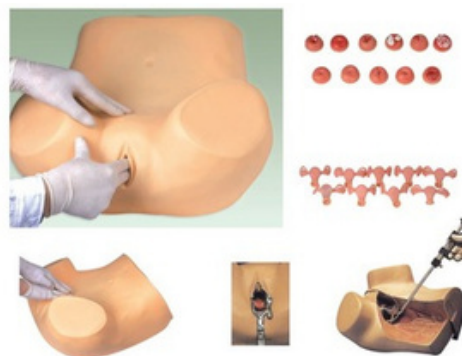
MP/6 Gynaecological Training Model



1. Palpation of normal and pregnant uterus
2. Bi-manual pelvic and tri-manual pelvic examination
3. Vaginal examination
4. Contraceptive instrument insertion and removal
5. Observation of uterus, ovary, fallopian tubes, and ligament.

MP-F30S Basic Gynecological Examination Simulator

- Palpation of normal and pregnant uterus
- Bi-manual pelvic and tri-manual pelvic examination
- Vaginal examination
- Visual recognition of normal and abnormal cervixes
- Contraceptive instrument insertion and removal.
- Observation of uterus, ovary, fallopian tubes, and ligament teres
- Normal and abnormal uterus and attachment model
- Place and remove IUD by using the guide fork of contraceptive ring
- Gravid uterus(Five-mouth fetus)
- Extra-uterine pregnancy(ampullary pregnancy)
- Salpingemphraxis



MP-F35 Advanced Gynecological Training Simulator



Features: It is including all the functions of F30S. Hysteroscopy checking, Laparoscopic visualization checking, can observe the Uterus, accessories, round ligament, uterine and other structures,. It can place the female condoms, contraceptive sponge, cervical cap and other contraceptives. Cervix, Uterus can be replaced
Components:

The normal and abnormal uterus and accessories model can be bimanual and triple diagnosis checking

Normal uterus and accessories (the front uterus wall is transparent, so the IUD can be placed and taken out.)

- Normal uterus and accessories, Uterus associated with significant flexion, forward.
- Uterus associated with significant back flexion, back forward.
- Uterus associated with right ovarian cysts tuba.
- Uterus associated with right tubal cyst.
- Uterus associated with right hydrosalpinx
- Uterine fibroids, Uterine inflammation associated with the right accessories
- Uterine malformations.
- Normal and abnormal cervix model (It is used for checking the parts by gyne catoptron) Normal cervix, Chronic cervicitis, Acute cervicitis
- Cervical cyst, Inflammation Sehntert, Cervical polyps, Cervical adenoma
- Normal uterus, Endometrial polyps, Endometrial hyperplasia
- Uterine fibroids
- Early uterine body cancer
- Advanced uterine body cancer, End uterine cancer
- Pregnant uterus model, 6-8 week of pregnancy the uterus, 10-12 week of pregnancy the utems, 20 weeks week of pregnancy the uterus
- Simulation of postpartum 48-hour uterus.
- The process of placing and taking out the IUD.

MP-FW2 Maternity Examination Simulator



- Palpation, embryo heart sound auscultation, pelvis measurement and mammary nursing training.
- Inflating uterus through ball to make model lifelike.
- Adjustable heart sound speed, volume.
- Heart sound can be heard not only from stethoscope but also from microphone in front board of the model.

MP-F8 Midwifery Training Simulator



The pelvic is life size with primary landmark and hand depicted outline. Smooth, soft skull with fontanelles for realistic vacuum delivery. All joint movements allow for different fetus positions to demonstrate a wide variety of normal and abnormal deliveries.

MP-F8A Difficult Labour Model



The simulator can demonstrate all kinds of difficult deliveries.

MP-F52 Advanced Delivery Mechanism Demonstration Simulator



An anatomically correct pelvic model with fetus and placenta to give students experience with multiple technique and procedure for emergency childbirth. Twinborn (one infant boy and one infant girl) presentation and delivery.

MP-10 Fundus of Uterus Exam.& Evaluation Simulator

1. With normal physiological changes of the postpartum women, provide assessment of postpartum fundus of uterus and massage skills training;
2. Hip joint is movable and can be placed correct body position;
3. Realistic anatomical landmark of united bones of toes;
4. Interchangeable Uterus: 1) Normal uterus 2) Postpartum uterus of the first hour 3) Postpartum uterus of the second day 4) Postpartum uterus of the second week 5) Callous uterus with good contraction 6) Soft uterus without good contraction
5. Expansion of vaginal orifice; 6. Easy to separate the labium minus and expose the vagina; 7. Lear energy of cunnus;



MP-F6 Model For Course of Delivery (Leopold Maneuvers Simulator)



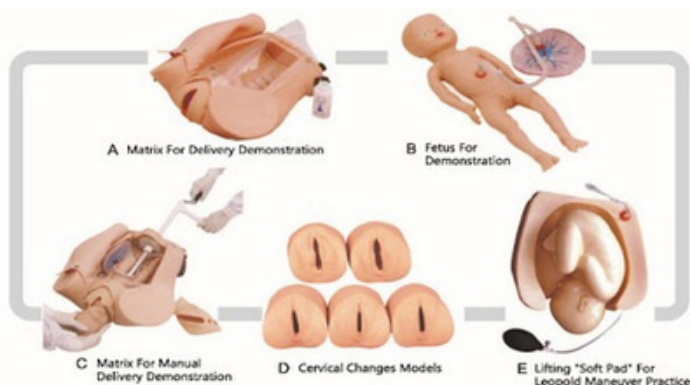
The model basing on the mechanism of normal labor, shows the cardinal movements of engagement: descent-flexion internal rotation of the head-extension-restitution-external rotation of the head-internal rotation of the shoulders.

MP-F53 Advanced Manual Delivery Mechanism Demonstration Simulator



Demonstrate the fetus, umbilical cord and placenta of vacuum-assisted delivery, flexible fetal joint, and multiple normal and abnormal positions of fetal delivery can be showed; Equipped with manual delivery mechanical parts; with the help of hands, the whole delivery process, including engagement, descending, flexion, internal rotation, extension, restoration, external rotation and fetal delivery, can be showed; Can practice and master the comprehensive skills of normal labor, abnormal labor (dystocia), midwifery and perineum protection.

MP-F54 Advanced Abdominal Palpation And Delivery Mechanism Integrated Simulator



Demonstrate the fetus, umbilical cord and placenta of vacuum-assisted delivery, flexible fetal joint, and multiple normal and abnormal positions of fetal delivery can be showed;

Equipped with manual delivery mechanical parts; by manual , the whole delivery process, including engagement, descending, flexion, internal rotation, extension, restoration, external rotation and fetal delivery, can be showed;

Can practice and master the comprehensive skills of normal labor, abnormal labor (dystocia), midwifery and perineum protection;

Equipped with soft elevated cushion for Leopold Maneuver practice.

Equipped with models for cervical and vaginal examination practice before and at birth;

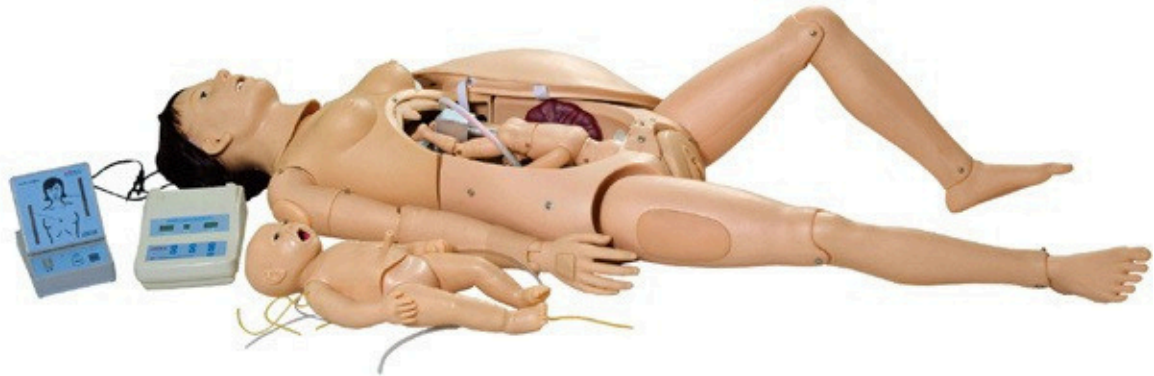
Component: B (Fetus for Demonstration) + C (Matrix for Manual Delivery Demonstration) + D (Cervical Changes Models) + E (Lifting "Soft Pad" for Leopold Maneuver Practice)

MP-F20 Child Birth Skill Training Simulator



Cervix check model: Size of cervical ore, effacement of fetal canal and the position of fetal head corresponding to the plane of ischial can be checked. Fetus model: The side is soft and fontanel is visible. Vacuum extraction, umbilical cord ligation, and placenta expulsion can be exercised. Childbirth model: The model consists of transparent abdominal well and lifelike side. Simulate normal or difficult labors, assist delivery, and perineum protecting. Perineum cutting and suturing training simulator The simulator can be used repeatedly. One set of the simulator consists of three components: separately simulate the right posterior, left posterior incision or median incision.

MP-F55 Advanced Delivery Maternal and Neonatal Emergency Simulator



Advanced Delivery Maternal and Neonatal Emergency Simulator is a comprehensive education system, which consists of a delivery maternal manikin and a normal newborn, according to the basic requirement of obstetrics, providing a complete birth experience and emergency skills operation. Simulator features include automatic delivery system, fetus and placental expulsion, Prenatal cervix examination and postpartum episiotomy, prenatal gravida and fetus and postpartum maternal and neonatal care, removable stomach covers multiple fetal hearts sounds auscultation and CPR operation etc. The Model is made of High-Quality PVC Material. The stomach wall is injection molded. The perineum is made of sponge emulsion material, features soft texture, good flexibility, realistic operation, reasonable structure, and durability. It is one of the ideal teaching aids for clinical obstetric practice Training.

Delivery and adult emergency used maternal manikin
 Emergency and nursing neonatal manikin
 Child birthing fetus
 Delivery process and fetal heart sound controller
 Adult CPR electronic display
 Simulative cervical os
 Antepartum cervical changes and birth canal relation modules
 Post partum 48 hours uterus
 Postpartum perineum incision and suturing modules
 Simulative placenta/umbilical cord
 Lifting "Soft pad" for Leopold maneuver practice
 Other auxiliary utensils

Equipped with lifting "Soft pad" for practicing Leopold maneuver; Equipped with antepartum cervical change and birth canal change modules, which can be fitted to maternal manikin for training; Stage 1: no dilation of cervix; cervical canal does not disappear; the position relation between fetal head and ischial spine plane is -5; Stage 2: 2 cm cervical dilation; disappearance 50% of cervical canal; the position relation between fetal head & ischial spine plane is -4; Nursing features: eye irrigation and drops, neonatal washing and bandaging
 Oral and nasal intubation, infant sputum suction, tracheal intubation and gastric lavage
 Infant umbilical cord nursing, scalp vein puncture, arm venous puncture, there is obvious feeling for venous puncture, and blood flash back indicated correct puncture

MP- Postpartum Basic Nursing and Breast Feeding Manikin



Features:

- 1) Standard adult manikin with flexible joints, which can meet all kinds of body positions
- 2) Comes with: torso-rotation, stretch; neck-rotation, flex,lateral bending; shoulder and hip adduction, abduction, rotation,flex; elbow-medial rotation, outer rotation; knee- medial rotation,outer rotation; wrist-medial rotation, flex, stretch, bend;ankle- varus, ectropion, adduction and abduction.
- 3) Supports sponge bath on bed; change clothes; help “patient” move to bedside; use wheelchair, flatcar or stretcher to move and carry the “patient”; axis turning methods, limbs constraintmethods, shoulder constraint methods, general constraint method;etc. Pupils observation: normal and mydriasis; aural nursing, oral nursing, tracheotomy postoperative nursing, oxygen inhalation and aerosol inhalation; BP measurement training.
- 4) Supports intramuscular injection: modules locate in the left and right upper arms and buttocks; real soup can be injected into the modules; and modules can be taken off for rinse; Ileum fistula on the abdominal wall connected to a liquid-collecting bottled for ostomy care Supports breast feeding
- 5) With all basic nursing functions and additional postpartum care and breast feeding function, the manikin simulates multiple symptoms of breast during lactation period: breast swelling, milk overflow, breast pain and sucking practice.Supports interchangeable male/female urethral catheterization, indwelling catheter and bladder irrigation, and simulative urine can be seen after successful catheterization.
- 6) Supports clyster: mass non-retention clysis, little non-retention clysis, cleansing enema, and retention enema:

The embedded breast module is detachable and interchangeable, and comes with all kinds of breast tumors, lymph gland, lobular hyperplasia for inspection and palpation.

The embedded lumbar puncture module is realistic and replaceable, and it allows repeated training

MP-L66 Thoracentesis Drainage Model

The Pneumothorax decompression, closed chest drainage of hydropneumothorax and drainage tube care after operation can be practiced. There are two visual windows in right thorax to show each layer of anatomical structures. Pneumothorax decompression training, closed drainage of hydropneumothorax training and thoracocentesis training in the left thorax. The color, volume and viscosity of the drainage solution can be regulated. The puncture cushion and drainage wounds cushion can be replaced.



MP-Q7 Pneumothorax Training Model



The half body male structure can be practiced for pneumothorax decompression. Use pneumothorax needle to exercise decompression of tension pneumothorax. The lung bag can be used repeatedly.

MP-L60A Neonatal Lumbar Puncture Model



Modeled on the baby life-size, lie on the side, could also simulated the sitting. Accurate sign of bone: the spinous process of the gap, the posterior superior iliac spine. Puncture site: 3-4 lumbar gap. The puncture correct simulation of cerebrospinal fluid outflow. With spare spinal and needle.

MP-L68A Central Venous Puncture & Catheterization Simulator



Features:

1. Precise anatomical structure: suprasternal notch, clavicle, right cervical ribs, sternocleidomastoid and etc.
2. Lifelike vessel structure: internal jugular vein, external jugular vein, subclavical vein and brachiocephalic vein.
3. The puncture of internal jugular vein and Subclavical vein and heart catheterization can be practiced.
4. The skin and veins can be replaced and students will feel an apparent "pop" when the needle has been thrust into the vein.

MP/L-1017 PICC Intervention Simulator



1. Adult's upper body made from special material, and the internal anatomical structure is distinct.
2. Transparent cyclic system: cephalic vein, basilic vein, jugular vein, subclavian vein, precava and heart; the whole process of the catheter entering precava can be seen.
3. Demonstration and practice of central and peripheral venipuncture can be done.
4. Osseous landmarks are distinct, which is good for practice in measuring the length of the intubated catheter.

MP/LV13 High-Set Bandaging Model



1. Simulate head and neck, chest and upper limb amputation patient, right arm cut off from the wrist, left hand cut off from the elbow;
2. Provide many kinds of bandaging method: circular bandage, spiral bandage, serpiginous bandage, figure of eight bandage, capeline bandage, masklike bandage, monocular bandage;
3. Demonstrate the fixing method of the two broken end after wrapping the bandage;
4. Keep arms a little external rotation to facilitate the bandaging.

MP/LV12 Low-set Bandaging Model



1. Simulate leg amputation patients, right leg cut off below the knee, left leg cut off in the middle of the thigh;
2. Convenient and reasonable model design, bandages can bypass the buttocks and wrap to the ridge level of the iliac;
3. Circular bandage, spiral bandage, serpiginous bandage, figure of eight bandage;
4. Demonstrate the fixing method of the two broken end after wrapping the bandage;

MP-F9G Vasoligation Training Simulator



1. The model is a simulative adult torso with right arm. There are apparent anatomical marks: clavicle, suprasternal notch, sternocleidomastoid muscle, pectoralis major muscle, ribs and deltoid muscle.
2. Lifelike veins: superior vena cava, internal jugular vein, subclavian vein, cephalic vein, basilic vein and median cubital vein, etc.
3. With apparent anatomical marks, the model can be used to practice the puncture of internal jugular vein, subclavian vein, cephalic vein and heart catheterization.
4. The skin and veins can be replaced. Students will feel an apparent "pop" when puncture needle has been thrust into the veins.

MP-H90E Decubitus Ulcer Care Simulator



- stages of ulceration
- Decubitus ulcer kinds: sinus, fistula, corruption scab, infection, bone exposure, eschar, suturing incision, Herpes and Monilia infection.
- Incision washing, evaluation and measurement
- Size: 37cm*19.5cm*29.5cm

MP-HS7 Advanced Blood Pressure Training Arm Model



Through this Arterial blood pressure measurement training can be run on this simulator. It provides the sound of Korotkoff Gap. The contraction pressure and diastolic pressure can be set individually before practice. The numerical value of the contraction pressure and the diastolic pressure can be set in any value. Pressure value is indicated by mm Hg. The setting precision can be as low as 1 mm Hg. Audio volume is adjustable. A monitor is used in practice.

MP-CK817 Pericardial Puncture and Intracardiac Injection Simulator

The simulation model takes the slope lying position, the texture is soft, the touch is real, and the appearance is vivid. Accurate anatomical position: The sternum, xiphoid, ribs, and intercostal spaces can be clearly palpated, and liquid is automatically pumped into the pericardial cavity to automatically form pericardial effusion. Feasible pericardial cavity puncture training, the puncture site is usually at the angle between the xiphoid process and the left rib arch, the puncture point of the apex is at the left sixth intercostal space, 2 cm inside the heart dullness, and the puncture needle has a more obvious sense of empty, You can draw out the liquid. The intracardiac injection site is 2cm from the left sternal border of the left four ribs. When the puncture is correct, there is a more obvious sense of emptying that can draw blood, and intra-cardiac injection training can be performed.



MP-L64 Peritoneal Dialysis Simulator



Designed to introduce the essentials of CAPD procedures and care. The torso offers a realistic method to demonstrate and practice peritoneal dialysis. Success with CAPD is dependent on the patient's following dialysis procedures.

MP/F-0031 Subcutaneous Embedded Contraception Arm



1. Imported material, realistic model, simulating left upper arm and lampros layer, and be mounted on the base plate.
2. Exercise of subcutaneous embed and dislodging contraceptive material;
3. Skin can be fixed

MP- TSE Model for Testicular Self-Examination

Small Size



Discover our range of TSE models, designed for effective testicular self examination. Choose from large and small sizes and explore our wholesale and customizable options for a personalized touch

MP- Mini Testicular TSE Self-Exam Model



The mini testicular TSE simulator completely reproduces the anatomical structure of the male reproductive system for effective testicular self examination. Testicular size, skin color, and logo customization are accepted

MP-H- 044 Adult Male Circumcision Trainer



The realistic male circumcision simulator available in 3 skin tones, is great for perfect prophylactic and therapeutic male circumcision skills for medical professionals

MP- Blood Sugar Testing Finger Prick Simulator



MP- Detachable Ingrown Toenail Trainer with Base



MP/LV17 Advanced Nasal Hemorrhage Simulator



1. Simulate an adult head and neck;
2. Accurate anatomic structure with nasal and nasal septum;
3. Simulate all clinical symptoms of epistaxis and train students ability to deal with contingency;
4. Provide trainings of simple hemostasis, cauterization and nasal packing;
5. Green light indicates successful hemostasis;
6. Can control the speed and amount of bleeding

MP-LV39 Advanced Rectal Touch Examination Simulator



Prostate examination mainly relies on rectal touch, which is the most simple examination method for BPH and must be carried out. Clear anatomical structure: prostate gland, glandular seminalis, rectum and anus; Four prostate palpation modules: normal size as chestnuts, I degree of hyperplasia as egg, II degree of hyperplasia as ducks egg, III degree of hyperplasia as geoses egg; Four rectal touch modules: normal rectum, rectum cancer A, rectum cancer B, porctopolypus; Cervical canal module; Support enema operation

MP-LV14 Advanced Ocular Inspection Simulator of Retinotherapy



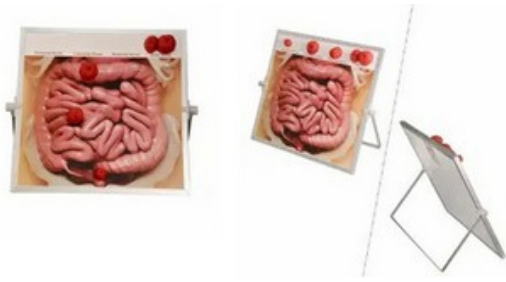
Replacement of different eyeground diseases, slide simulates common clinical oculopathy, including: Normal retina Age-related retina macular degeneration /colloid bodies Central retinal vein occlusion Hypertensive retinopathy, Papilledema, Excavation of optic disc, Optic atrophy, Mild background diabetic retinopathy, Background(pure) diabetic, retinopathy Pre-proliferative diabetic retinopathy, Pre-proliferative diabetic, retinopathy, Hypertrophic diabetic, retinopathy Diabetic retinopathy, Realistic affection, easy to replace and operate. In favor of repeated contrast observation. Provides 15 kinds of retinopathy accessories.

MP-LV16 Advanced Ear Inspection Simulator



Simulation of right ear, standard intra-aural examination site Accurate anatomical structure of auricle, external auditory canal, tympanic membrane. Ear lesion examination via otoscope. Provide 14 kinds of ear lesion components for conveniently replacing Include: Normal auricle, Normal ear drum, Tympanic membrane hyperemia, Otopiesis, Small tympanic membrane perforation, Whole tympanic membrane perforation, Traumatic perforation of tympanic membrane, Myringotomy and tube insertion, Tympanosclerosis, Tympanosclerosis crescentic sclerosis plaques, Serous otitis media effusion, Early acute congestive otitis media, Chronic suppurative otitis media, Pearly tumor and Osteoma of external auditory canal. Earwax clean-up operation practice.

MP-H-200 Ostomy Display Board



The ostomy model kit is designed to demonstrate and teach ostomy care on a tabletop or wall display. Provides four kinds of stoma and a whiteboard with a high-definition intestinal anatomy diagram to better explain and practice stoma care procedures.

MP- Stoma Simulation Kit



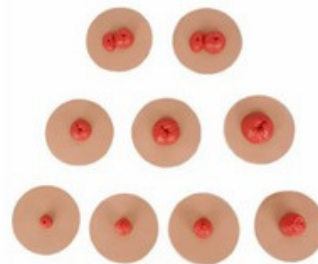
The tactile realism ostomy training models of realistic appearance have the function of simulating excretory and providing a realistic stoma care training experience for training practitioner.

MP-38 Ostomy Nursing Model



The anatomy of colostomy and ileostomy are carefully reproduced to provide life like functions and appearance. The model can be operated in erect position or side - lying position. Intubation feeding can be actually operated in the ileostomy.

MP- Sticky Ostomy Stoma Care Training Models Set



Designed to help introduce the essentials of ostomy care to patients and students, these ostomy simulators are ideal for the demonstration and practice of ostomy care procedures

MP- Pitting Edema Training Model



Observe how long the pitting is present after the release of indentation depth and pressure decides and grade it subjectively; e.g. renal edema, cardiac edema, etc. 2. Shows 4 stages: Stage I, mild depression, slight indentation (2mm), no obvious swell; Stage II, moderate depression, indentation (4mm) disappear rapidly; Stage III, deep depression, indentation (6mm) lasts for a while only, small swell area; Stage IV, severe depression, indentation (8mm) lasts for a long time, very large swell area.

MP-L63 Prostate Examination Simulator

Demonstrates eight separate prostate glands supplied with the torso. Each gland can be inserted into the prostate torso to allow realistic practice in diagnosis by rectal palpation. Realistic reproduction of an adult lower part with standard posture for prostate examination; Anatomy of rectum, genitalia, normal and abnormal prostate; Eight separate prostate glands are supplied with the torso: Normal prostate gland with distinct intermediate sulcus; Prostatic hyperplasia: the smooth and tenacious prostate gland enlarges highly and intermediate sulcus disappears; Acute prostatitis; Acute prostatitis with abscess, showing hard and highly enlarged prostate gland; Benign, slightly enlarged; A discrete, hard nodule is palpable in the upper right quadrant, simulating the early stage of prostate tumors; The spread of carcinoma is demonstrated in this gland, and the small nodule changes into a mass; Gland totally replaced with carcinoma. Perform prostate massage.



MP-H35 Enema and Assisted Defecation Training Simulator



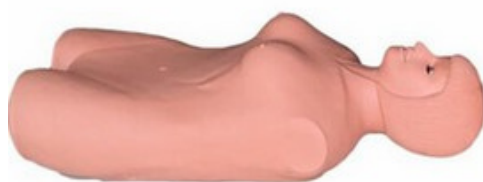
Simulate bed patient and old people, who can't defecate by themselves. The abdominal wall can be opened so as to directly observe the operation. Disassembly and washing is very simple.

MP- Neonatal Peripheral and Central Vein Intubation Simulator



1. Transparent chest wall and made of special material, perspective effect of bilateral venous channel; 2. Correct anatomical position: basilic vein, cephalic vein, jugular vein, subclavian vein and superior vena; 3. Direct observation of rib and heart, measure the correct inserted length of catheter; 4. Transparent part of the superior vena and visible of the ductal position in the case of correct catheterization, or the catheter is invisible; 5. Exercise of standard venous catheterization position

MP- Abdominal Palpation Manikin



Features: 1. Elective palpation positions and experience of different symptoms 2. Palpation: liver palpation, spleen palpation, gallbladder palpation and syntheses palpation, frequent disease tenderness and rebound tenderness

MP- Infant Auscultation Manikin



Contains normal and abnormal heart sounds, breath sounds, bowel sounds and vascular murmurs of infant. Work together with electronic stethoscope.

MP- Child Auscultation Manikin



Features:

- Normal and abnormal heart sounds, breath sounds, bowel sounds and vascular murmurs can be auscultated on each manikin
- Work together with electronic stethoscope



MP-TCZ001 Auscultation Manikin

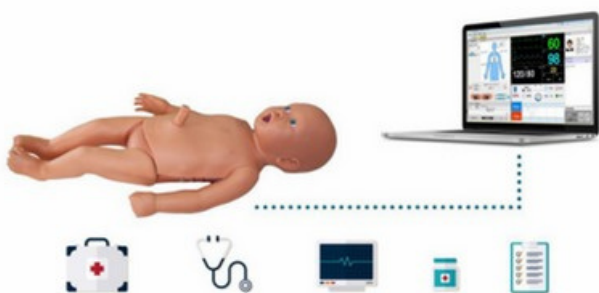
1. Half-body male manikin
2. Rotatable, convenient to maintenance and delivery
3. Resonance cavity structure principle makes cardiopulmonary sound fully save and keep tone
4. Over 80 kinds of Hi-fi auscultatory sounds

MP-XD-1 Cardiopulmonary Auscultation Training Vest



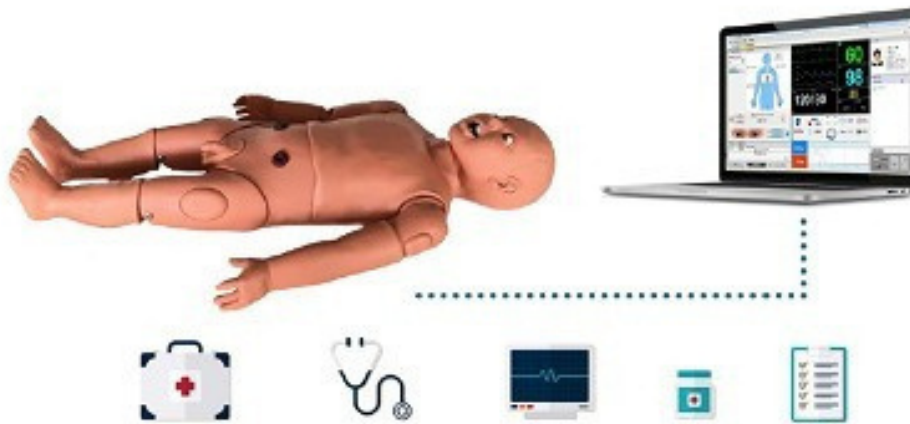
1. Collects most common clinical norma and pathological heart sounds and breath sounds;
2. Wearable design
3. Teacher can choose different heart and lung sounds at random for students' diagnosis
4. Multiple auscultation sites for heart sounds and lung sounds are built in the front chest, back and midaxillary line, etc.
5. Choose different sounds via remote control for auscultation exercise.

MP- Neonatal ACLS Emergency Training Manikin (Wired)



Vital signs simulation: pupils (one normal and the other mydriasis), femoral pulse, brachial pulse and radial pulse, etc. Airway management: realistic mouth, nose, tongue, gingiva, pharynx, esophagus and epiglottis, supports endotracheal intubation, sputum suction, gastric intubation. NIBP measurement, intramuscular injection, bone marrow puncture, venous transfusion, venepuncture. Cardiopulmonary auscultation. CPR training. Real and simulative defibrillation, pace-making and ECG monitoring. Umbilical nursing and neonatal nursing operation, etc

MP- Child ACLS Emergency Training Manikin (Wired)



Implement Standard: AHA (American Heart Association) 2015 Guideline for CPR & ECC

1. Pupils: one normal and the other mydriasis;
2. Carotid pulse can be palpated.
3. Airway management: realistic mouth, nose, tongue, gingiva, pharynx, esophagus and epiglottis, simulation of foreignbody clearance, airway opening by means of head tilt, chin lift and jaw thrust. Supports endotracheal intubation, and there's prompts on the screen if intubation is correct or not.
4. Simulates spontaneous respiration with chest rise, support bilateral and unilateral chest rise.
5. Cardiopulmonary auscultation.
6. Thorax and Abdomen
 - 1) Manikin comes with organs: lungs, stomach, bladder and rectum. Both lungs support ventilation, and liquids can be injected into or drained out of the bladder and rectum.
 - 2) Pneumothorax puncture and paracentesis can be performed bilaterally.
 - 3) Auscultation: heart sounds, breath sounds, bowel sounds, and normal heart sound and breath sound vary with monitored heart rate and respiratory rate.
 - 4) Gastric intubation: supports gastric lavage and gastrointestinal decompression operation, detects tube position via auscultation, and gastric liquids can be extracted after successful intubation.
 - 5) Simulation of skin color: normal, central cyanosis, peripheral cyanosis, mixed cyanosis and pallor.
 - 6) Urethral catheterization: boy and girl perineum part is interchangeable, supports both male and female catheterization.
 - 7) CPR: supports multiple ventilation ways: mouth to mouth, mouth to nose, BVM to mouth and endotracheal intubation, etc; electronic monitoring of airway opening, intubation depth, blowing times and tidal volume, compression times and frequency, compression sites and depth and auto judgement of the ratio of compression and artificial respiration.
 - ★ Real defibrillation and pace-making: working together with real defibrillator and pace-maker prepared by user-self can achieve real defibrillation and pace-making.
 - ★ ECG monitoring: working together with real ECG monitor prepared by user-self can achieve real ECG monitoring.
 - ★ Simulative defibrillation and pace-making: working with simulative cardiac defibrillation pace-maker, available choice of defibrillation energy, and the max energy is 360J.
7. Limbs: manually measure the blood pressure, venepuncture/transfusion, skin care, intramuscular injection, bone marrow puncture (tibia), flexible cervical vertebrae and joints make it possible to adjust the body position from sitting to decubitus.

MP- Sim380 Advanced ACLS Manikin (Wireless)



- 1) Represents of an Asian adult male with accurate anatomical structures, and supports wireless manipulation;
- 2) Powered by built-in lithium battery, allows to set all kinds of breathing modes and connect to real ECG and real difibrillation pacing monitor, which is suitable for treatments during various transportation environments.
- 3) Comes with complete oronasal cavity, airway and esophagus; supports cricothyrotomy endotracheal intubation; supports chest rise.
- 4) With external compression detector, dynamic curves of compression depth, compression sites and compression frequency can be showed in real time with records and assessment.

Simulated Training for Acute and Critical Adult Rescue:

Main devices for adult emergency skills training: one advanced computer, one intelligent adult emergency manikin, one multi-parameter monitor and one defibrillator. And other common advanced rescue devices and emergency medicine.

MP- Haemostatic Wound Packing Trainer for Medic & Emergency Training



The wound packing trainer with gunshot wound and dry blood is a beginner-level trainer for emergency and tactical medic training. Help develop muscle memory and hone bleeding control skills.

MP- Basic Wound Packing Task Trainer



The dry wound packing task trainer is ideal for teaching wound packing with gauze. Hone gunshot wound packing skills. Widely used in emergency training, medical education.

MP- Thigh Laceration Wound Packing Trainer Kit



The Thigh Laceration Wound Packing Trainer Kit provides realistic thigh laceration wound simulation and a complete set for comprehensive training.

MP- Laceration Wound Hemorrhage Control Trainer Kit



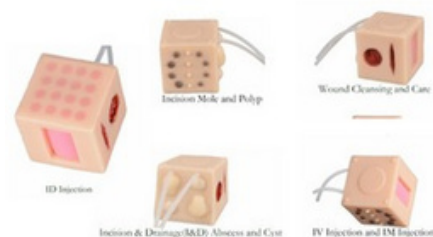
This model is an excellent way to demonstrate wound dressing and use it as a teaching model in emergency training.

MP- Gunshot Wound Stop The Bleeding Training Kit



Get the Gunshot Wound Stop The Bleeding Training Kit to enhance the realism of wound packing when training. Support customization and wholesale.

MP- Multicube 6 Sides Simulation Model



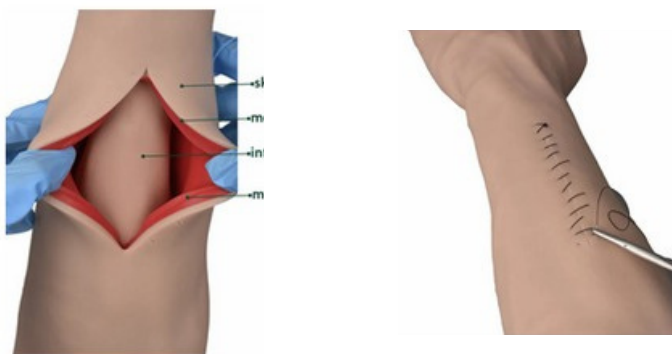
This multi-purpose hands-on medical simulation cube is designed to practice essential clinical skills related to venipuncture, percutaneous injections, sinus wound care, etc. Support 6 sides

MP-H- 0327 Wearable Open Fracture Wound Packing Trainer



This innovative wearable trainer greatly simulates II-V open fractures and allows wearing on the leg or arm to practice immobilization and wound packing techniques in open fracture scenarios, enhancing emergency medical training.

MP-H- Hand Surgery Simulator



It is crafted for realistic hand surgery simulation. Perfect for DIY wound closure practice in various arm locations. Ideal for educational institutions and professional training

Features:

Realistic Construction: Crafted from high-quality silicone, our suture practice arm replicates the look and feel of human skin, muscle, and bone.

Durable Mesh Layer: The skin and muscle layers are reinforced with a durable mesh, ensuring longevity and sustained use. Each cut can be sutured several times.

Comprehensive Training: Our suture arm is perfect for practicing suture and stapling etc wound closure techniques, and enhancing your suturing proficiency.

Wounds can be inflicted by the instructor anywhere on the training arm and then students start to practice suture.

Ideal for Education and Training: The arm surgery simulator is suitable for school teachings and professional training scenarios, providing a hands-on learning experience. **Two Skin Color Options:** Light and dark skin are available and support customization.

MP- Abrasion Wound Care Simulation Sleeve



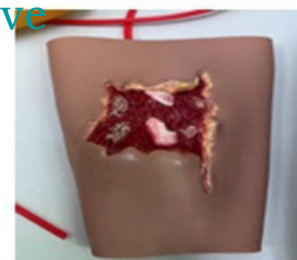
A lifelike abrasion wound care trainer designed for hands-on practice in wound packing and treatment techniques, essential for nursing and medical education. Bulk order, OEM, and customization accepted

MP- Blast Injury Open Fracture Wound Trainer Sleeve

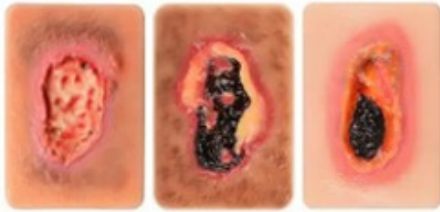


A lifelike blast injury trainer sleeve designed for realistic open fracture wound care, bleeding control, and fracture immobilization training on mannequins or human legs. Bulk order, OEM, and customization accepted

MP- Wearable Fractures Wound Sleeve



MP- Pocket Necrotic Tissue Wound Card Model, 3 Types



This compact wound care model kit features 3 types of necrotic tissue simulators, including 2 types of dry necrotic wounds and 1 type of wet necrotic wound, mounted on a small card base, ideal for teaching the characteristics and treatment of necrotic wounds in medical education. Logo and wound card customization accepted.

MP- Pocket Granulation Tissue Wound Model Set for Wound Care Education



This compact granulation wound simulator set includes realistic models of healthy, chronic, hypergranulation, and mature granulation tissues, designed to teach wound healing characteristics, assessment, and treatment. Ideal for medical schools and universities, hospitals and healthcare clinics, research and development teams, etc.

MP- Wearable bruise wound sleeve



MP- Wearable Arm Wound Model



A life-sized, wearable amputation arm trainer designed for military, emergency, and tactical medical training, offers realistic limb traumatic injuries wound packing, and tourniquet application practice. Wholesale and customization available

MP- Small Intestine Simulator



Made with unique silicone material and innovative design. Replicates the real human intestine for intestine suture skills training. Available for medical students or doctors to simulate the process of suturing the intestine.

MP- Clear Facial Injection Face Upper Face with Veins



MP- Clear facial injection face lower face with veins



MP- Clear Nose Model for Injection Practice



MP- Clear Lip Model for Injection Practice



MP- Female Mannequin Head for Facial Injections Harmonization Training



The transparent left side of the model shows internal structure including bones, muscles, nerves and veins, facilitating to compare left side with right side and avoiding damaging the nerve and veins. Correct intramuscular injection sites can be palpated. A buzzer and two color flashing lights will warn students if the needle position is incorrect.

MP- Transparent Mannequin Face for Facial Injection and Thread Lifting Training



The unique transparent injection training mannequin head is perfect for facial injection, thread lift, and orofacial harmonization training. Provides estheticians and medical professionals with a lifelike platform for honing their skills.

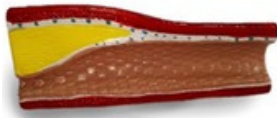
MP- Facial Injection Face Upper Face



MP- Facial Injection Face Lower Face



MP-C017 Artery Model



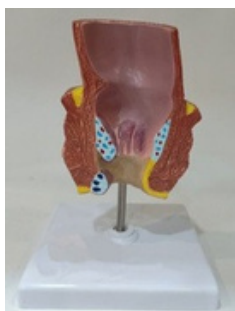
With the help of this artery model doctors can explain changes in the blood vessels due to arteriosclerosis. A horizontally dissected artery fork is depicted with arteriosclerotic changes in four different stages, from slightly sediment to a completely clogged blood vessel. Arteriosclerosis model on stand.

MP-Human Nasal Cavity Anatomical Model



This model shows the internal structure of the mouth, nose, pharynx, and larynx as well as structures such as cerebrovascular and cranial nerves.

MP-D015B Diseased Rectum Model



It shows the hemorrhoids of rectum structure and with comparison of the normal one. Size:12*12*16cm, Weight:0.2kgs

MP- D015C Hemorrhoids Model



This anatomy model is a life-size frontal section of the rectum as well as a smaller relief on a pedestal. In addition to the anatomical structures of the rectum (sphincter, mucous membrane, venous plexus), the model shows internal hemorrhoids during stage I and II as well as external hemorrhoids. The relief exhibit shows hemorrhoids during stage third and fourth.

MP-Artery Lesion Sclerosis Model



The 7-piece arterial model shows healthy arterial anatomy and demonstrates atherosclerosis, detailing the progression of blockage.

6 progression of blockage: Calcified plaque, Vulnerable, Rupture, Thrombus, MI, Obstruction

MP-H-4220 LDL Blood Vessel Comparison Model



The dynamic Atherosclerosis model with LDL clearly shows the blood vessels from health to illness. Ideal for doctor patient education. Help better understand the damage of LDL on blood vessels.

MP-D013 Diseased Digestive System Model

2 parts, stomach can be removed. It shows stomach cancer, gastric ulcer, intestinal cancer etc diseases



MP-D016 Diseased Esophagus Model



This vivid esophagus model is a life-size frontal section that reaches from the lower part of the esophagus to the upper part of the stomach. The following illnesses are replicated in the diseases of the esophagus model: Reflux esophagitis, Ulcer, Barrett's Ulcer, Esophageal carcinoma, Esophageal varices and Hiatal hernia .

MP- Diabetic Foot Model



The Diabetic Foot Model represents a foot with three ulcers in various stages of development as well as other features commonly associated with diabetes.

MP-D035A Diseased Liver Model (Small)



Highly detailed model. Shows lobule, ligaments, cyst, biliary system of liver. Made with high quality PVC.

MP-D021D Diseased Stomach Model



This model describes the most common pathological patterns of human stomach, such as gastric ulcer, gastric cancer, chronic atrophic gastritis, gastric bleeding and so on. Life size human stomach model, with highly detailed shown, great for medical/class study tool.

MP D034A Diseased Pancreas, Spleen and Gall Bladder Model



This full size model of diseased pancreas, spleen and gall bladder shows pancreatic cancer, the gallbladder with stones, a ruptured spleen and duodenum with an ulcer.

MP-D035 Diseased Liver Model



Liver pathologies shown by the model include: biliary obstruction, cirrhosis (septal and nodular), tumors (liver cancer) and gallstones. This liver model comes complete with base. Full size liver model with the following common pathologies: Cirrhosis (septal and nodular), biliary obstruction, gallstones and tumors.

MP-1504 Disc Prolapse Simulator

This vertebral disc simulator demonstrates the principles of an intervertebral slipped disc in an interactive way; if the two vertebrae are pressed, the prolapse can be seen.



MP-119 Lumbar Sacrum with Herniated Disc

The model features anatomy of lumbar spine, sacrum, and coccyx and also shows herniated lumbar disc. The model is best suited for medical student learning and teaching.



MP- 4 Stages Osteoarthritis Hip Model

Set of 4 hip models (1/2 scale) illustrating: degenerative joint disease (osteoarthritis); erosion to joint articular cartilage; Progression of degenerative joint disease; osteophytes (bone spurs) at the articular surfaces.



MP-L045B 4 Stages Knee Arthritis Model

The model shows the different stages of knee arthritis.



MP-134 Vertebral Osteoporosis Model

Consists of 3 medially divided lumbar vertebrae with intervertebral discs, the upper section shows healthy bone structure, the middle section osteoporotic bone structure and the lower section advanced osteoporotic bone structure with flattened plates, deformation and decreased bone mass.



MP-1505 Lumbar Vertebrae Degeneration Model



4 Stages Of Lumbar Degeneration Model is a set of four, full size two-piece vertebrae models. It features one each of the following conditions: normal, OE bulging, herniated disc, bone and disc degeneration, and advanced osteoporosis with marked bone compression and bone spurs.

MP 3 Stage Arthritis Knee Model with Implant

This impressive model shows three scaled down knee models. In addition to the healthy knee this model shows a diseased knee as well as a knee with knee implant. All models are movable.



MP-H-151 Osteoporosis Model (Femur & 4 Vertebrae)



Consists of an osteoporosis femur model and an osteoporosis vertebrae model. The well-crafted and dedicated designed

medical skeleton trauma anatomy instruments are great for school teaching, learning display, collection, and lab supplies.

MP- N051 Brain Stroke Model



This life size model depicts 3 different pathologies that involve the vascular system of the brain, including arteriovenous malformations (called AVM), in which the blood vessels are tangled together rather than forming a normal circuit. Other featured conditions include a cerebral aneurysm and a cerebrovascular hemorrhage (stroke). On base with stand. Size: 18.5*15*15cm, Weight: 0.5kgs

MP-R012 Asthma Model



It shows asthma disease. Made of high-quality unbreakable PVC Plastic. Anatomically accurate. Size: 12*12*20cm, Weight: 0.7kgs

MP - Diseased Lumbar Spine Model



MP - Skin Acne Model



MP-U043B Diseased Uterus Model



This model shows diseases of uterus model. Size: 20*17*10cm, Weight: 0.89kgs

MP- Pathological Uterus Model



The product provides a detailed display of the anatomical structure of female endogenitalia, including the ovaries, fallopian tubes, uterus, vagina, and vestibular glands. It shows a three-layer structure of the uterus

MP-H015C Hand Arthritis Model



This model of full size hand with cutaway views to reveal the effects of rheumatoid arthritis on ligaments, flexor and extensor tendons, muscle, cartilage, bones, synovial membrane, and joint spaces. A cross-section of the metacarpophalangeal joint capsules.

MP-R034 Thyroid Disease Model

This set comes with one normal and 3 diseased thyroid.
Size: 20*17*16cm,
Weight:0.9kgs



MP-R034A Thyroid Disease Model

This model shows thyroid's structure, thyroma and thyroid cancer.
Size:17*13*16cm,
Weight:0.6kgs



MP-145 Lung Disease Model



Full -sized 2-sided model of two separate lungs with 4 cutaway sections illustrating normal anatomy and the effects of COPD (Chronic Obstructive Pulmonary Disease), Cancer and asthma.
Size:19*13*17cm, Weight:1.1kgs

MP-R052 4PC Bronchus Model



This model shows the bronchus, split into a four stage cross-section, which illustrates the tissue changes that occur in asthma and chronic bronchitis. Four Stages: Normal bronchus, Hypersecretion of the mucous gland, Swelling with lymphoid aggregations and Smooth muscle spasm Model Features: Cartilage, Mucous glands and plug, Spiraling smooth muscles, Fibroelastic connective tissue and Epithelial layers of the bronchus
Size:13*10*4cms

MP-S037 Human Cataract Eye Model

This oversized human cataract eye anatomy model of a normal human eye includes interchangeable lenses that show the following types of cataract conditions: subcapsular, capsular, mature, cortical and nuclear.
Size:20*13*16cm,



MP - U023 Kidney Cyst Model

This two-sided kidney model has a normal anatomy cutaway on one side and a diseased anatomy cutaway on the other side depicting: infection, scarring, atrophy, urinary (kidney) stones, tumor, polycystic disease, hypertension effects.
Size:12*12*16.5cm,
Weight:0.8kgs



MP-U071A Prostate Examination Model



This model of prostate examination comes with 1 normal prostate model and 5 diseased prostate model. Made of silicon.

MP-U017 Normal And Diseased Prostate Gland



The model consists of three prostate sections, including the rectum and urinary bladder. The first model shows the internal and external structures of a normal prostate. The second one illustrates benign prostatic hyperplasia, characterized by variable fibromuscular and epithelial predominance. The third model illustrates prostatic adenocarcinoma.

MP-U076C Diseased Breast Model



This model shows Infiltrating scirrhous carcinoma, fibroadenoma, cysts, and an adenocarcinoma. Model also includes structures such as suspensory ligaments, fat tissue, lymph nodes, muscles and ribs. Size:16*11*7cm.

MP-D053A Diseased Tooth Model



This diseased tooth model represents a molar tooth with multiple pathologies. Both internal and external structures are available for observation as part of the model has a cut-away section. The tooth model is one piece and the pathological structures include tartar, cervical caries, caries, apical periodontitis, pulpitis and gingivitis. Size: 6*4.5*10.5cm,

MP-U034 Diseased Bladder And Prostate Model



This life-size model is sectioned along the frontal plane and shows, five different pathologies of the male urinary bladder in the typical location: cystitis, bladder stones, benign prostatic hypertrophy (BPH), diverticulum, as well as bladder tumor at three different stages. Mounted on stand. Size: 12*12*17cm, Weight:0.3kgs

MP- Colon Pathological Model



Cut-away view model of the colon with the following common pathologies: Adhesions, Appendicitis, Bacterial infection, Cancer, Crohn's disease, Diverticulitis, Diverticulosis, Polyps, Spastic colon, Ulcerative colitis.

MP- Cervical
Occipital Bone



MP- Lumbar
Vertebrae Column
Model



MP- Thoracic
Vertebrae
Model



MP- Spine
Model



MP- Femur



MP- Tibia



MP- Tibia
with Fibula



MP- Foot



MP- Leg



MP- Knee



MP- Tibia &
Fibula with Ankle



MP- Humerus



MP- Scapula



MP- Radius



MP-
Shoulder



MP- Training
Block With
Shoulder Tendon
Simulation



MP- Ulna



MP-
Clavicle



MP- Hand



MP- Elbow



MP- Wrist



MP- Pelvis



MP- Hemi-Pelvis



MP- Half Skull



MP- Meniscus



MP- Sacrum



MP- Fracture Bone



MP - Knee Arthroscopy Model



MP - Shoulder Arthroscopy Model

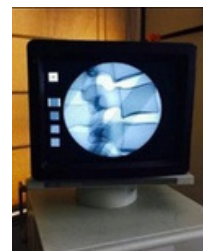


The Arthroscopic Knee Trainer is ideal for ACL reconstruction either arthroscopically or open. Includes permanent soft tissue sleeve, replaceable ACL knee joint insert and all appropriate clamps.

The Arthroscopic Shoulder Trainer is ideal for reconstruction either arthroscopically or open. Includes permanent soft tissue sleeve, replaceable joint and all appropriate clamps.

MP- Lumbar Fluoroscopy Manikin

This Spine Surgery Simulator, is developed in order to replace the use of human bodies for surgical training. More ethical, more economical and overall, more convenient than a true cadaver. The standard Lumbo-sacral model contains a T10- to-sacrum spine and also SI joints. If you are interested in medical imaging, the spine is covered with an X-ray opaque coating. The model can be used for training C-ARM guided injection



MP- Cervical Fluoroscopy Manikin

This model features a spine from occiput to T1 with posterior ligament . It can be opened through a posterior or an anterior approach, which make this model quite versatile and allows to train for placing cages, plates or screws always in realistic conditions. The bones come with fluoroscopic coating for using under C-Arm. Can be used by Pain management doctors for Carm guided injection training.



MP- Thoracolumbar Fluoroscopy Manikin



Often considered as an extension of the Lumbar Spine Surgery Simulator, this version features the contours of a quasi-complete human back, from T1 to Sacrum. The principle remains the same: an artificial spine included in a realistic foam mannequin. An X-ray Opac coating is added for medical imaging visibility.

